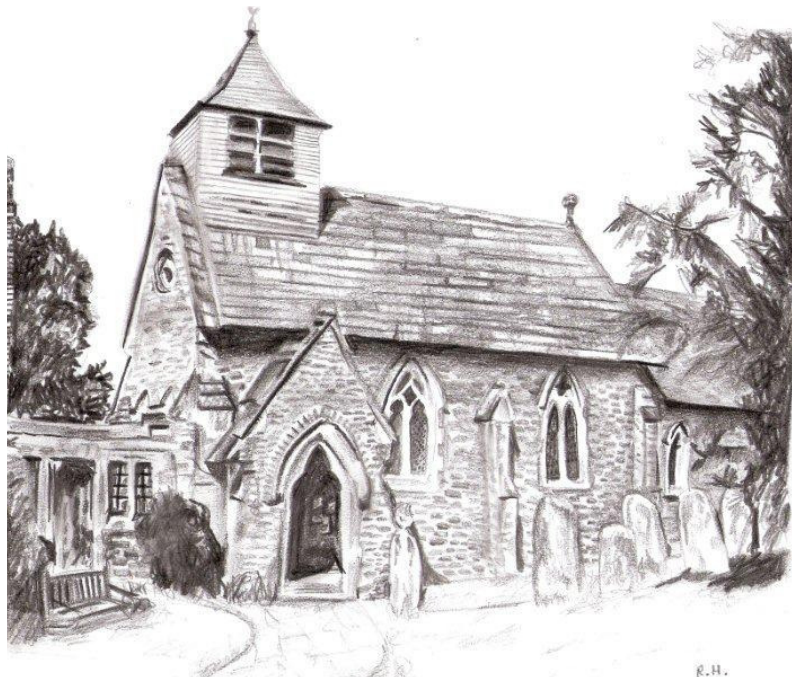


# *Hambleton Parish Magazine*



## St Peter's Church



## & Village News



July 2010

50p





## PARISH CHURCH OF ST PETER, HAMBLETON

Associate Minister	The Rev'd Stephanie Couvela Mervil Bottom Malthouse Lane Hambleton	01428 682753
Reader	Mr D. Jenkins 6 Quartermile Road Godalming	01483 416084
Churchwarden	Mr Nigel Pollock Brackenwood, Brook Road Wormley GU8 5UA	01428 682116.
Assistant Church Warden	Mr David Chadwick, Little Beeches, 14 Springhill, Elstead, Godalming, GU8 6EL	01252 702268
Church Treasurer & Gift Aid	Dr Alison Martin Tillies Munstead Heath Road Godalming	01483 893619
Children and young people	Youth and Children's Worker Jessi Mordin	07882 186359
Sunday groups	Crèche, Pre-School: Georgina Aylward School Years 1-6: Liz Jenkins	01428 682591 01483 416084

---

### Sunday Services

Full details of these and any other services are set out in the Church Calendar for the month, which is shown on page 5

---

Home Groups meet regularly on Monday afternoons and Wednesday evenings at various locations. Details from Roger Mathews Tel: 01483 420464

Alpha details and information from David and Liz Jenkins Tel No: 01483 416084

Baptisms, Weddings and Funerals contact Busbridge and Hambleton Church Office Tel No: 01483 421267 (Mon – Fri 9.30 – 12.30pm)

Where there is sickness or where a visit would be valued, contact the Church Wardens.

The Rector and Associate Minister are normally off duty on Fridays.

The nearest Roman Catholic churches are St Teresa of Avila, Chiddingfold (Fr. Stephen Hardaker 01428 643877); St Edmund, Croft Rd, Godalming and St Joseph's, Milford (Fr. Michael 01483 416880)

TO SUBSCRIBE AND HAVE THE MAGAZINE DELIVERED PLEASE CONTACT  
PAT WILLIAMS 01428 682455



## Pastoral Letter – July

Dear Friends,

As I write I have only six Sundays left as Associate Minister here, and I can't believe how quickly the time is going. There seems to be so much to do just to get things organised to move house! As I look towards my new role, it's very difficult to imagine what it's going to be like – the community at Scargill House is brand new, and they are having to work out what they're doing as they go along – so there is no nice, tidy job description waiting for me, or a clear set of expectations about what it will all look like. That's pretty scary!

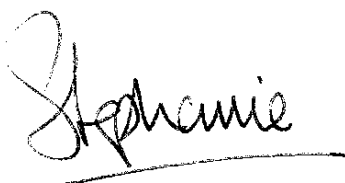
But again and again I am reassured by the promises of God, who has called me to Scargill so he must have something good in mind: "What no eye has seen, what no ear has heard, and what no human mind has conceived – these things God has prepared for those who love him." (1 Corinthians 2 verse 9). If we are ready and willing to be used by God, he'll open up opportunities that we can't begin to imagine – whether that involves moving to Yorkshire or staying right here in Hambledon. When times are uncertain we can trust him not just to keep us going, but to lead us in ways that cause us to grow and flourish, and that are a gift not just to us but to those we encounter.

The other day a friend in Busbridge church emailed me with a Bible verse that had come to her mind when she was thinking about my new adventure: "God is able to make all grace abound to you, so that in all things at all times, having all that you need, you will abound in every good work" (2 Corinthians 9 verse 8). She told me that her Bible reading notes for that day had said, "Notice the 'alls' in this promise... it's the 'policies and resources clause' of God's unshakable kingdom!" With all the resources of God available to me, the future is bound to work out okay – for me, and for Hambledon church.

In the meantime, it would be wonderful to have the chance to say Farewell to you all! On Saturday 24<sup>th</sup> July there are two events to suit all tastes!

If you're planning to come to either event it would be helpful to know so that we have an idea of numbers – do contact Gill Matthews, 2matthews@tiscali.co.uk, 01483 420464.

I do hope to see you at one or the other.



Stephanie Couvela,  
Associate Minister,  
Busbridge and Hambledon

# More Tea, Vicar?

4.00–5.30pm: High Tea  
in Caroline and George Pitt's garden  
Malthouse Farm, Malthouse Lane  
Hambleton GU8 4HH



## The Rocking Reverend

**7.30–Late: Party!** Hambleton Village Hall,  
Malthouse Lane, Hambleton  
Featuring Roger Matthews's  
Amazing Expanding Rock'n'Roll Band  
Please bring drinks for yourselves  
and finger/buffet food to share

### CHURCH CALENDAR

July 2010

<b>4th</b>	8.00 am	Holy Communion (BCP)
<b>5th Sunday after Trinity</b>	<b>10.30 am</b>	<b>Giles Carpenter's ordination at the Cathedral</b> <b>NO Service at Hambleton</b>
<hr/>		
<b>11th</b>	9.30 am	Holy Communion (CW)
<b>6th Sunday after Trinity</b>	11.00 am	Morning Worship (with Children's Groups)
<hr/>		
<b>18th</b>	9.30 am	Holy Communion (BCP)
<b>7th Sunday after Trinity</b>	11.00 am	Morning Worship (with Children's Groups)
<hr/>		
<b>25th</b>	9.30 am	Morning Prayer (BCP)
<b>8th Sunday after Trinity</b>	11.00 am	Holy Communion (CW)
<b>This will be Stephanie's last Sunday in Hambleton</b>		
<hr/>		
<b><u>And in August</u></b>		
<b>1st</b>	8.00 am	Holy Communion (BCP)
<b>9th Sunday after Trinity</b>	11.00 am	Family Worship
<hr/>		

**Saturday 17 July 9.00 am to 10.00 am - Church Rooms**

**A time to meet together for prayer: all are welcome**

**Services at St. John's, Busbridge – every Sunday**

8.00 am: Holy Communion (2nd Sunday in the month, BCP)

10.00 am: "Classic" service in Church; "Contemporary" service in Busbridge Junior School;  
Groups for children of all ages in various locations – turn up and ask!

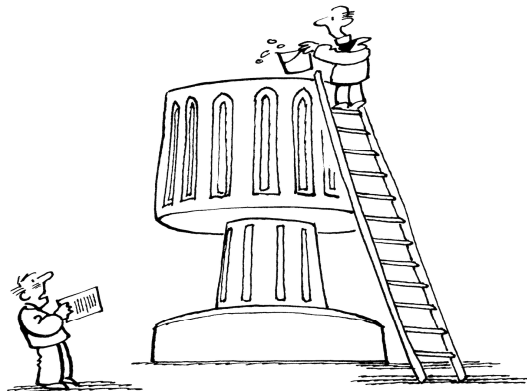
## PARISH & PEOPLE



A welcome village wedding this month. Hambledon friends and neighbours send all good wishes for a happy day to **Sophie Kiley** and **Gary Dowkes** who are marrying at St Peter's Church.

**Mary Caroe** is getting around on crutches following a fall and damaging ligaments in her ankle. We feel for her and send the good wishes of us all as she struggles with this busy season of garden-opening activity.

We have been much cheered to see **June Booker** getting herself to the village shop following several months of inactivity. A lady who does not believe in "giving in" and one whom we all admire.



...er, Vicar, when I said 'It would help in our church publicity if we used a larger font.'...

## The mowers – A tribute

**Mary Parker**, whose cakes we adore, has been moved to thank those enthusiasts who keep the churchyard nicely trimmed

Now Hambledon churchyard I'm sure you all know  
Is a tranquil old place but still needs a mow.

Various schemes have been tried over years  
But of late they just seem to end up in tears.

Word got around that the parish next door  
Formed a team of young men to cope with that chore.

If they can so organise we'll do so too  
So up did stand TP to muster a crew.

Of all sorts and sizes both young and mature  
Their mowers they bring to tackle verdure.

So Saturday mornings all summer long  
Sees someone a-mowing – are they singing along?

Once the stint is completed to pub they repair  
To quench a rare thirst with Colin's best beer.

The point of this ditty's to give hearty cheers  
To our valiant gang of many mowers.

## 2010 HAMBLEDON FLOWER, FRUIT AND VEGETABLE SHOW

Saturday, 4 September,  
Hambledon Village Hall

Look out for a full list of classes to enter in next  
month's Parish Magazine.

Or contact the show's organiser,  
Andrew Falk, 01428 683863

# Farewell to Stephanie

**For all of us in Hambledon it is a mixture of much regret and quite a lot of joy to be saying goodbye to Stephanie at the end of this month....**



**R**egret because of the place she has found in our collective heart and joy because the post she is going to is so very much "her". Although we will really miss her we will think of the happiness and satisfaction she will find at Scargill.

You will already know that there will be plenty of opportunity to say our personal farewells on the weekend of 24th and 25th July.

On the evening of Saturday 24th we will give her our present of a cheque to show our appreciation and gratitude for all that she has been for us over the past six and a half years. If you would like to contribute to that will you please pass a cheque to me or leave it in a designated box at the village shop.

Cheques to be made out to me, please.

*Nigel Pollock*

## Hydon Hill "Cheshire Home"

**Hydon Hill is a specially built residential care home with nursing beds for up to 46 disabled adults at Hydon Heath, Busbridge, Godalming, Surrey. The Residents come to live at the home as a result of a long term or acquired physical disability.**



**Hydon Hill** is a specially built residential care home with nursing beds for up to 46 disabled adults near Godalming in rural Surrey. The Residents come to live at the home as a result of a long term or acquired physical disability.

Leonard Cheshire Disability supports over 21,000 disabled people in the UK and around the world, campaigning for change in attitude to disabled people and giving disabled people the opportunity to live their lives as independently as possible.

As well as a team of committed staff, the home relies on the dedicated help of their Volunteers and is

looking to recruit more in a variety of roles. Just a few of the many and varied roles offered are Sunday bar helpers, Gardeners, Befrienders, Physio and Activities helpers, Fundraisers, in house shop and Charity Shop helpers.

This year we are keen to promote our large on-site Charity Shop, manned by volunteers and open Monday to Friday 11am to 3pm. Our on-site shop is located to the rear and right of the main Hydon Hill home in a large wooden building which has a ramp for wheelchair access. The shop sells good quality adult and children's second-hand clothes, shoes, accessories, toys, games, jig-saws, bric-a-brac, c.d.'s, curtains, materials and many other miscellaneous items. This year we have been building up our stock of books for adults and children. Do come along and have a look at our goods, parking is free and prices are very competitive.

If you would like to know more about volunteering at Hydon Hill, contact Volunteer Co-ordinator, Sandra Cameron on tel. 01483 860516 extn. 228. She will tell you more about the training and support offered and arrange for you to come and have an informal look around the home. Or why not visit the web-site: [www.lcdisability.org/hydonhill](http://www.lcdisability.org/hydonhill)

Leonard Cheshire Disability –  
Hydon Hill, Clock Barn Lane  
Godalming, Surrey, GU8 4BA  
Charity No. 21818

**Leonard  
Cheshire  
Disability**

## Thank you

Elizabeth Secrett and family would like to thank Stephanie Couvela and their friends at Hambledon for all their kindness, sympathy, cards, prayers and support during the time of their loss of their dear Alan and would wish you to know their full appreciation.



# Hambledon Village Fête

& Dog Show 🐕

## Fête-full Thanks

Watch this space in August for more reports of Hambledon at its best – in typical English summer

At the time of going to press few actual results are known except that we had a large attendance, plenty of activity, fine weather and prospects of a good financial result. The evening dance party also went well. All details will be in August issue.  
*Mic Coleman*

**Mid Summer Madness Disco** Thanks to wonderful efforts from the helpers, 160-170 young people enjoyed a great evening, raising over £1000 towards work in Bolivia by Ivar and Fiona Andrade-Brown and people there. Full report in August issue.

*Vicky Hinde*

**Mid-Summer Evening Party** This was a real village effort, entertained by Mike and his Band, when 250 people had a lovely party, raising funds for the Hambledon Football Club.

Again, more in August. *Vicky Hinde*

**The Cellar** Grateful thanks to all who gave so generously at the Hambledon Fête to the sale of fruit and home-grown/made provisions raising £270 towards the The Cellar holiday.

*Jacqueline Hindley*

The Lord does not shine upon us, except when we take his Word as our light. *John Calvin*

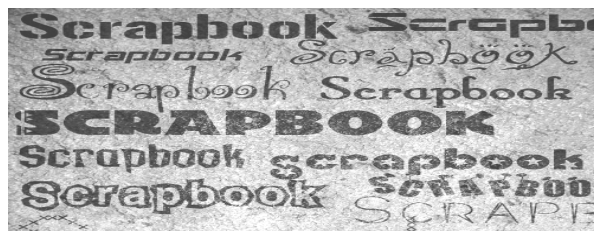
The worst poverty today is the poverty of not having spiritual values in life. *Cardinal Basil Hume OSB*

Do not give, as many rich men do, like a hen that lays an egg - and then cackle. *Henry Ward Beecher*

## Hambledon Scrapbook

I have taken over keeping the current scrapbook up to date. If you have got any photos (e.g. of the Fete) or press cuttings etc. which would be of interest could you very kindly let me know. .

Elizabeth Waring 01428 683350



## Wednesday Afternoon Group

**Next Meeting** Wednesday 14<sup>th</sup> July

Following the success with our Bring-and-Buy in May we now invite you to

**Busbridge Lakes**

**Tea Provided**

Meet at Hambledon Village Hall at 2pm.

All welcome. Any queries:

Jan Kilsby 01483 423637



## And even the sun shone (a bit)



Happy, smiley faces . . .

There'll be more photos of the Village Fete in next month's magazine. If you want to submit your own favourites (preferably via jpeg), please do. Send them to [psryland@waitrose.com](mailto:psryland@waitrose.com). We might even manage to rustle up a prize for the best photo.



The former editor takes a break



...and more of them



One of them's very cute



Who's in charge here?

**HAMBLEDON CRICKET CLUB**  
**FRIDAY 9<sup>TH</sup> JULY 2010**  
**BBG 2010 COLTS PRESENTATIONS**



**activities will include:**

**Under 9s vs. Dads match at 6pm**

**Competitions for Under 10s, 11s, 12s and 13s**

- **Bowl out the coach**
- **Throwing the cricket ball**
- **Hit football match**

**5.30pm start**

**at the Cricket Green**

**BBG from 6.30pm Licensed Bar**

**Awards 7.45pm**

**£5 per head**

# We tick the right boxes... you involved?

Join us in the AGM - stay and get involved:  
It's your shop.

**T**he shop AGM is about to take place. It will be held on Sat. July 3<sup>rd</sup>. at 12.00am in the Village Hall. If you are able to come (all are invited) I think you will find it most interesting. If you study the accounts you will see that we made a small loss. How much more this would be without all the voluntary help one does not wish to speculate upon. This shows that the shop could not run without all of you and myself putting in a substantial amount of free time. Another observation is that this loss comes about due to the heavy depreciation that the accountants include in these figures. This is due to the result of the grants we have obtained to buy equipment. In other words we are victims of our own success.

Recently on BBC 2 was a programme about what is required to run a successful village shop. We mostly



ticked all the right boxes and can show many other advantages being a community shop. We don't need to join in with village activities to promote ourselves - we are already involved. Or are we? A large proportion of the senior helpers don't live in Hambledon, they come from outside the Parish. Even I only just live on the right side of the dotted line! The plan for the shop shows we are short of one senior volunteer - a person who can help, perhaps by raising the standard of the deli, or improving the coffee we dispense.

I suggest you come to this AGM and contribute your ideas After all, it is your shop! **P.J.U.**

## BYWAYS

An occasional column  
from around our plot



## Poetic justice

**Magpie is complaining bitterly about cuts to the Surrey police budget and has come over all poetic this month. Hence the pun in the headline**

I have been reading with some trepidation about the proposals to close down police stations in the county. Now, if you have a police station in the middle of a Surrey town, the police know all the trouble spots, all the dodgy estates and most of the trouble makers. So, without the police station, where are you going to phone when you need some help – the leisure centre? the council offices? And where are the police cells?

The police authorities say that shutting stations will release an extra 200 officers onto the beat. Well, yes. The trouble is that a quick glance at a Surrey atlas tells me there are around 175 towns in the county, plus all those villages.

So will these extra bobbies really make much difference? I doubt it. But, as the forces have to cut their budgets come what may, it will help them balance their books.

I don't want to sound too cynical, but isn't it strange that the *Readers Digest* seemed to go bust just before its prize draw. Then got rescued just after it didn't happen. Hmmm.

Now, as I'm English and proud of it, I'd say, forget about all the foreign muck – I'm talking about food – and listen to John Whitworth's poem about toad-in-the-hole. Here it is:

Frenchmen go to the dogs thinking horses and frogs  
Are the stuff you should put in your belly.  
And those hordes of Italians, as potent as stallions,  
Chew pizza and tagliatelle.  
Though a burger and relish may taste pretty hellish,  
Americans think it the thing.  
But an Englishman's soul craves a toad-in-the-hole,  
It's a dish that is fit for a King.

You'll be bigger and fatter on sausage and batter.  
The world will admire how you've grown.  
You'll be hearty and hale and you'll soon turn the scale  
At the best part of twenty-four stone.  
No, you'll leave not a crumb for its made by your mum  
And there's nothing as good in the shops.  
No, you can't get enough of this wonderful stuff  
For a toad-in-the-hole is the tops

Talking of food, should you be anywhere near Wokingham, the Broad Street Tavern at 29 Broad Street is worth a visit. Good food, good ale and wine and nice staff. And clean, too, says the other half. And that reminds me, at last she half has found a copy of her favourite poem, The Volunteer Organist, and insists that I include it.

The preacher in the village church one Sunday morning said,

"Our organist is ill today, will someone .play instead"

An anxious look crept o'er the face of ev'ry person there,  
As eagerly they watch'd to see who'd fill the vacant chair.  
A man then stagger'd down the aisle whose clothes were old and torn.

How strange a drunkard seem'd to me in church on Sunday morn.

But as he touch'd the organ keys without a single word,  
The melody that follow'd was the sweetest ever heard.

The scene was one I'll ne'er forget as long as I may live,  
And just to see it o'er again all earthly wealth I'd give.

The congregation, all amaz'd, the preacher old and grey,  
The organ and the organist who volunteered to play.

Each eye shed tears within that church, the strongest men  
grew pale,

The organist in melody, had told his own life's tale.

The sermon of the preacher was no lesson to compare

With that of life's example who sat in the organ chair;

And when the service ended, not a soul had left a seat,  
Except the poor old organist who started toward the street,

Along the aisle, and out the door, he slowly walked away,  
The preacher rose, and softly said, "Good brethren, let us pray."



# Rain, roses, flags, football



Rain just in time, England in summer, the World Cup.  
All good earthy stuff.

**T**he rain came just in time in June, lawns were really beginning to look parched and plants were drooping. Earthworm peered from his compost heap (now really growing in size and warmth with the welcome addition of weeds and lawn-mowings both of which had increased following the wet spell), and there was sunshine. Summer had come!

**Did he just blink too quickly?** It seemed that in a trice the signs of summer had vanished. Of-course more rain was much needed, and indeed what did fall was not enough. Somehow Hambledon always seemed to miss out on the heavier showers, but what did come our way was enough to encourage vegetables and annuals now newly planted to get their roots down and the grass grew with a flourish.

Roses are bursting out, cascading not only from garden walls but also from the hedgerows. The cold winter seems to have been beneficial to them, masses of blooms and to date not a sign of black-spot or bugs, mildew or mould. Or should Earthworm hold his tongue? Who know what the next few months may bring?

Earthworm marvels that in just a few weeks the hedgerows and trees are in full leaf, horse-chestnuts flowering, and the lanes sparkle with white stitchwort and ox-eye daisies, foxgloves and pink campion (where the thrasher spared them!).

Earthworm does not doubt that in the on-coming weeks more eyes will be glued to the TV sets than on gardens as the World Cup series gets under weigh. What excitement it stirs! Patriotic flags fly from cars and windows, gardens are decorated with our St George flag, and there are all sorts of places to gather and watch the matches, not least at our own "local".

Earthworm wonders what England's chances are? He has to admit that he really is not much good on football, neither the rules nor the form! He has heard that there are injured players whose names are vaguely familiar. He really prefers the racing pages to the "The Game" section if the truth be known! Perhaps there would be most jubilation if the host country won? What about North Korea too? At least they have allowed a team out of the country but will their oppressed people be allowed to follow the games, such is the censorship?

Earthworm is not much in to betting but he will follow the results with interest. Who couldn't? May-be the football will take the spot-light off Wimbledon and it will certainly provide many a talking point.

Holiday time will soon be upon us. Who knows the stay-at-homes may get some lovely sunshine and let's hope the travellers are not too inconvenienced by the threatened strikes and the usual summer delays. Happy holidays to all!

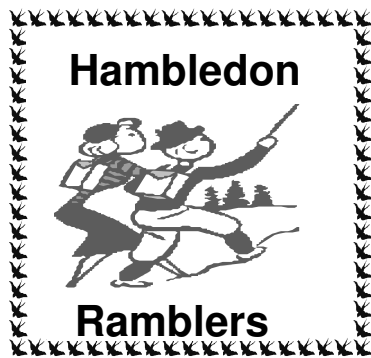


"It's not a mistake, you haven't heard our choir!"

**Climate Change Prayer** *The challenge of climate change is huge, we will all have different ways of responding but one thing we can all do is pray.*

Creator God, we praise you for all that is.  
You are the nourishment and strength of sunlight,  
and the loveliness of moonlight on the bay.  
Earth yields its blessings,  
but we have grasped and wasted and hoarded  
until Creation is stressed and its resilience tried.  
Guide us to change our ways,  
even learning ourselves from those who might teach us  
and become healing role-models for the rest of our world.  
Then with confidence we also might praise you for  
judging with equity  
and even be found faithful in all things.  
Let the river of the water of life wash over us  
and the leaves of the tree bring us health.

By Charlie West (Source: Eco-congregations)



# The Low Weald

**The Low Weald Ebernoe, Northchapel and Lurgashall :  
Trial by stiles, economy of waterproofing and a stiff North-Easterly**

**J**une's walk (eight miles) provided a test of the agility of the seven participants – what it lacked in hills it made up for in stiles – and of the waterproofing of their boots. More than one pair of boots failed the test so socks were rung out or changed at lunchtime.

The start was from the car park by the church in the hamlet of Ebernoe. The church was built in the 19th century from locally made brick. The churchyard, walled to exclude rabbits, is a haven for wild flowers. (The porch is a haven for wet walkers.) The road to Ebernoe off the A283 passes so close to the cricket pitch that the boundary line is painted across the tarmac.

We headed north past Ebernoe House and reached the east side of Mercers Furze when light rain started and continued for most of the morning. Through the drizzle we could see the Air Navigational Beacon on the skyline to our right. Crossing a bridleway we continued on the footpath towards Northchapel across a field of long wet grass and buttercups. By now some socks had started to feel damp.

At Northchapel we crossed the A283, turned left and then right on a minor road by the 4x4 garage. After the last house we took a footpath on the left that went through a wooded area, across a footbridge and out into more fields of long wet grass. We ended up (intentionally) by a minor road that led downhill to the hamlet of Hillgrove. Before we joined the road we stopped for coffee at the edge of the field by a conveniently placed tree trunk that had been hollowed to

make a bench. The view eastwards from here over the Low Weald was superb and would have been even better but for the low cloud.

From Hillgrove we headed west through more fields and then turned south towards Lurgashall through a wood in which now flowered foxgloves instead of bluebells. By the time we reached Lurgashall, our stop for lunch, the rain had ceased and the sun had started to shine. It was warm enough for us to sit outside the pub and try to dry off.

After lunch we set off through the churchyard and paused to look inside the church. We were fortunate in that the rain held off and the sun continued to shine but more fields of long wet grass meant more wet feet. Our route headed east across the A283 by School House Farm where a flock of sheep reluctantly moved away from us. We continued to head east and reached the cricket pitch at Ebernoe and shortly after that arrived back at the church.

**Next Walk July 13th**  
**Meet at the Village Hall at 9.00am**  
Walk yet to be decided.

**Short Walk 27th July**  
**Meet at the Village Hall at 2.00pm**  
Further details from:

Long Walk  
Derek Miller 01428 684362  
Short Walk  
Mary Parker 01483860339

## Copy deadlines for the August magazine

The deadline is Thursday, July 15  
Please send your copy to

Philip Ryland  
Little Leat, Lane End  
Hambledon, GU8 4HD  
Email: psryland@waitrose.com Tel: 01428 683111

Advertisers, please contact  
Tony Parker  
Email: the.parkers@virgin.net  
Tel: 01428 683577

# Black Bob and the rocker

Ross confesses to a deep affection for a sheep dog that lived for 38 years and to his days as a rocker

Ross's  
ramblings

July – it's high summer! Here's what to do. First, get out the wheel barrow. Second, fill with food, preferably sliced ham, Scotch eggs, chicken and mushroom vol-au-vents, smoked salmon, venison pâté, devils on horseback, fresh bread, mixed salad, chilled white wine and, not forgetting, a giant hip flask. Third, head into the woods with a couple of friends and enjoy. Oh, and you could always phone me first.

Now for a bit of sad, but true, news. A 50lb pike called Heather the Leather – really – who has been living in a pond near Fleet for 40 years, and has been caught about 1,000 times, has finally died. I bet her remains weren't sold to the local chippy.

Is there anyone in the village over 50 – silly question really. Anyway, those of you who are might have been brought up on the *Dandy* comic. If so, you'll surely remember Black Bob, the *Dandy's* wonder dog. I certainly do. I lapped it up. The great news is that now you can buy a facsimile collection of Black Bob's best adventures (see the picture below) – a marvellous birthday present. And – gosh – wouldn't you just know that it's my birthday and Good-wife Jan's in July. A hint, or what?

Some of you may know that back in the dim dark 1960s I was what was known as a "ton-up boy", or a

rocker. And I find that a pal of mine from those days whom I have not seen since the 1970s has written a ditty about a café that we used to frequent just outside Birmingham – Alex's.

We also used the Deepdene Café and the Tirola in Dorking, the Caprice in Morden and the Saltbox, not forgetting the Ace Café in central London (still going). In those days, bikes had a real problem doing the ton. These days, of course, they can almost do twice that. Scarey.

Don't forget that picnic and, if you fancy a village picnic, I will meet you by the Cricket Pavillion on Sunday 8 August around 11:30-ish. Bring some food and drink.

Now, here's that poem – oh, and check out page 18 for an interesting little motor.

In our city, it was well known

Alex's in the central zone

It was an open-air café, you see

Where one could get hot pies, cup of tea

That place where rockers congregate

To discuss bikes, see your mate

Lil was her name that served the tea

Steak pie, cup of tea, two and three

On a good night there could be fifty machines

Some beautiful, built to that bloke's dreams

Bonnie lads knew that they were fast

But, Oh! Then came Norton SS, Rocket Gold Star, it could not last

Velos, Ajays, Enfields too

Just to name but a few

Straight-through exhausts, keep it down!

In case Old Bill's around

Ring road, local burn-up track

You buy the tea if you're the last one back

Each night, favourite places to invade

Stourport one, where you could meet, Ace of Spades

Black Country lad, his Norton was fast

But, alas his crown did not last

That night whilst setting the pace

Before our eyes, engine blew up in our face

Back at Alex's discuss the events of that night

There was rarely someone having a fight

Some rockers are cunning

Their bikes looked like trash, not stunning

But inside their lump, pure gold!

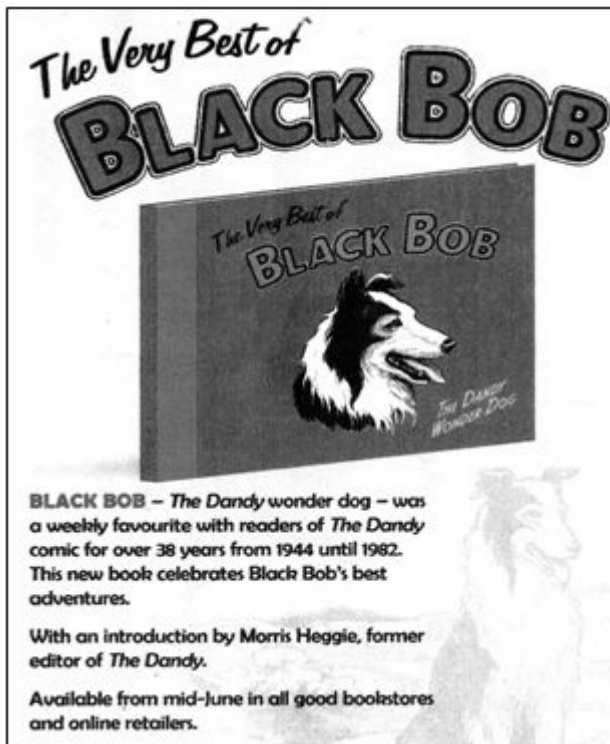
They were fast, but looked so cold

Alex's which stood on the Ringway of Brum

We lads then had so much fun

Time on our patch was running away

But we've got good memories that will always stay.





# A Man's Grill

Now this is a man's BBQ!

(all ingredients, of course, from The Village Shop)

Entering the BBQ season: it is important to refresh your memory on etiquette of this sublime outdoor cooking activity. When a man volunteers to do the BBQ the following chain of events is put into motion:

## **Routine...**

1. The woman buys the food.
2. The woman makes the salad, prepares the vegetables, and makes dessert.
3. The woman prepares the meat for cooking, places it on a tray along with the necessary cooking utensils and sauces, and takes it to the man who is lounging beside the grill - beer in hand.
4. The woman remains outside the compulsory three meter exclusion zone where the exuberance of testosterone and other manly bonding activities can take place without the interference of the woman.

## **Here comes the important part:**

5. THE MAN PLACES THE MEAT ON THE GRILL

## **More routine...**

6. The woman goes inside to organize plates & cutlery
7. The woman comes out to tell the man that the meat



is looking great. He thanks her and asks if she will bring another beer while he flips the meat.

## **Important again:**

8. THE MAN TAKES THE MEAT OFF THE GRILL AND HANDS IT TO THE WOMAN

## **More routine...**

9. The woman prepares plates, salad, bread, utensils, napkins, sauces, and brings them to the table.
10. After eating the woman clears table, does the dishes

## **And most important of all:**

11. Everyone PRAISES the MAN and THANKS HIM for his cooking efforts.
12. The man asks the woman how she enjoyed 'her night off' and, upon seeing her annoyed reaction, concludes that there's just no pleasing some women.

## Real Beauty

**The beauty of a woman is not in the clothes she wears,** the figure she carries, or the way she combs her hair.

**The beauty of a woman must be seen in her eyes -** because that is the doorway to her heart - the place where love resides.

**The beauty of a woman is not in a facial mole, but true beauty in a woman is reflected in her soul.**

It is the caring that she lovingly gives, the passion that she shows,

**The beauty of a woman with passing years only grows**



I don't mean to cause alarm, but I think the smoke and ash from the barbecue has grounded most of the aircraft

## Now you know ...

A Sunday School teacher asked her class why Joseph and Mary took Jesus with them to Jerusalem. A small child replied: "They couldn't get a baby sitter."

## Real Mothers

Real Mothers don't eat quiche;

They don't have time to make it.

Real Mothers know that their kitchen utensils  
Are probably in the sandbox.

Real Mothers often have sticky floors,  
Filthy ovens and happy kids.

Real Mothers know that dried play dough  
Doesn't come out of carpets.

Real Mothers don't want to know what  
The vacuum just sucked up...

Real Mothers sometimes ask 'Why me?'  
And get their answer when a little voice says,  
'Because I love you best.'

Real Mothers know that a child's growth is not  
measured by height or years or grade...

It is marked by the progression  
of Mummy to Mum to Mother....

## Who's best at the wheel

Children feel safer in the car when their mother is driving, according to a recent study by GEM Motoring Assist. Youngsters 5 to 16 said their fathers drove too fast, were more aggressive and lost their temper at the wheel. Six out of 10 children said their mother's driving was better, even though she was more likely to stall the car or find it hard to park.

# Love food, hate waste

If only, you say to yourself, as you read the heading. But now Surrey has a county-wide campaign on the move to encourage householders to waste less food. It's more than food for thought

Nine out of ten Surrey residents admit to throwing away some uneaten food, according to research carried out on behalf of the Surrey Waste Partnership. A recent survey for the partnership, which is made up of Surrey County Council and the 11 district and borough councils in the county, showed that fruit, vegetables and salad feature high on the list of foods thrown away by residents. Half of those surveyed said they throw away completely unopened packs of food and two thirds throw away food that's been allowed to go off.

Food waste accounts for 20 per cent of the waste generated by Surrey households every year, with disposal costs in the region of £7.6m. So the Surrey Waste Partnership has launched a countywide Love Food Hate Waste campaign to encourage residents to reduce the amount of food they waste.

Surrey Waste Partnership's chairman, Jean Pearson explains: "Food waste is a significant issue in the county and it's vital that the amount being generated is reduced. We hope the campaign will encourage resi-

dents to stop and think about the food that ends up in the bin, and make a pledge to reduce it."

National research shows that an average family can save up to £50 a month on their shopping bill if they take steps to reduce their food waste and there are significant environmental benefits, too.

The campaign will include roadshows at supermarkets, shopping centres and large Surrey businesses, where a Surrey Waste Partnership team will offer tips and advice on reducing food waste and making the most of leftovers.

"There are lots of food items that end up in the bin that could be put to good use," says local chef Carmela Tomkins, who lives in West Byfleet and runs her own catering company. "My recipes show simple ways that leftover food can be turned into delicious meals for the whole family."

For tips and advice on reducing food waste, ideas for cooking with leftovers and more facts on food waste, visit [www.lovefoodsurrey.com](http://www.lovefoodsurrey.com) and see the advertorial show below.


## Use it, don't waste it

8.3 million tonnes of food and drink goes to waste in the UK every year.

Surrey Waste Partnership (Surrey County Council working with the 11 district and borough councils in the county) is running Surrey's own Love Food Hate Waste campaign, which aims to raise awareness of the need to reduce food waste.

£12 billion worth of food and drink goes to waste in the UK every year, so the campaign aims to show Surrey families how they could save up to £50 a month on their food shopping bill, simply by cutting down on throwing away food.

We hope the following tips will inspire you to start thinking about what you can do to reduce food waste - just by doing some easy everyday things in the home you can spend less on food, reduce your food waste and help the environment.



Finalist at LOVE FOOD hate waste


## Make the most of your leftovers

### Friday Stir-Fry Serves approx 4

Leftovers could be used for tomorrow's meals. Think about how much money you could save by not buying lunch, or another meal. Why not try this delicious leftover recipe from Surrey chef Carmela Tomkins.

Ingredients	Method
Any combination of vegetables cut into strips or bite size portions, e.g. carrots/peppers/courgettes/broccoli/cauliflower/shredded cabbage/runner beans/mushrooms	1. Mix the soy sauce and shredded meats into a small bowl and season with salt and pepper.
Any combination of shredded cooked chicken/pork/beef/lamb/bacon	2. Heat the oil, garlic and onion in a large frying pan or wok.
1 onion finely sliced	3. Add the shredded vegetables to the wok and fry for 3/4 minutes, adding some stock to ensure that it does not stick or burn.
2/3 tbsp of sunflower oil	4. Finally toss in the shredded chicken or other meats and cook for a further 5 minutes, adding more stock if the vegetables are sticking, until the meats are thoroughly cooked and vegetables are al dente.
1 clove of crushed garlic	
2/3 tbsp of soy sauce according to taste	
Cup of hot chicken stock (fresh or made from a stock cube)	
Salt and pepper	

Carmela Tomkins is of Italian origin and lives in Surrey. She owns her own catering business and believes that cooking should be fun, economical, quick, easy and appeal to adults and children alike.



Surrey waste partnership  
Your councils working together

# Speedsters in Witley

**Hambledon's neighbourhood police officer, PC Tracey Taylor, has been out in Witley with her speed gun and found that most of the motorists speeding were locals**

I am happy to report that May only saw one crime in Hambledon. We also saw a decrease in Milford, Witley and Brook. Sadly, we still continue to have shed and garage burglaries across Waverley. Please make sure you never leave a garage or shed unlocked, especially if it has a connecting door to the house. Fit strong padlocks to shed and garage doors and make sure that the doors are solid enough not to be kicked in. For a few pounds, you can purchase a shed alarm from a DIY store.

Speeding and parking issues still continue to be raised across Milford, Witley, Hambledon and Brook. Many of you may have seen Dave (shown in the photo) and me recently in Witley conducting School Speedwatch with Chandler School.

Over the two days we stopped 110 cars that were exceeding the 30mph speed limit along the Petworth Road in Witley. It appears the majority of people stopped were locals. PCSO Dave Boxall and I are continuing to carryout speed enforcement across the area.

So, please take care not to exceed the speed limits, or you may find yourself being issued with a speeding ticket or summons to attend court.

Meanwhile, if you have any issues or concerns, please feel free to stop Dave or me. If you would like to contact us, please call on 01483 630086 or email [wswaverleysnt2@surrey.pnn.police.uk](mailto:wswaverleysnt2@surrey.pnn.police.uk).

We also have a page on the Surrey Police website. See the link, <http://www.surrey.police.uk/neighbourhood/neighbourhood.asp?area=WVMW>.

■ Do you have any issues that you would like to discuss with your local Safer Neighbourhood Team? We hold surgeries across the area regularly. Please see the dates below:

Hambledon – Hambledon Village Shop

Saturday 31st July 2010 – 9:30-10:30

Wednesday 18th August 2010 – 10:30-11:30

Saturday 25th September 2010 – 9:30-10:30



**Watch out, there's a speed cam about**

## Nice runner , one lady owner – honest, guv



Ross Kilsby assures us that this is a genuine sale and not simply a photo of a sad and abandoned 1960s Volvo that he snapped somewhere (and not even the model that Simon Templar, aka the Saint, used to drive around that time). We're sceptical but, anyway, here is the wording of Ross's "ad".

For sale. Goodwife Jan's lovely Volvo. 1st class condition. One lady owner. Full service history can be verified by Grabham, Flattenham and Scrapham Motors of Peckham. Offers over £13,000.



**Seniors fixtures** Matches for the 1st.XI, 2nd.XI and the Friendly XI from end of May through June have been reasonable good. The 1st XI only losing one match to Abinger.

You can find results and information on Hambleton Cricket Club on the web at [www.hambletoncc.play-cricket.com](http://www.hambletoncc.play-cricket.com). Anyone who would like to play, or help in other ways (eg, teas, umpiring) please contact any of the captains.

**Colts** The colts season is going well with U9s, U11s &

U13s matches in the Berkley League. The U11s are doing well with wining all their matches so far. Colts coaching sessions continues to be run on Saurday mornings (10.00 – 12.00) to 17. July for under 9s and under 11s. For more information contact:

Under 9s Team Manager: Caroline Wood. Email [wood.caroline1@googlemail.com](mailto:wood.caroline1@googlemail.com)

Under 11s Team Manager: Simon Rhodes. Tel 01428 682401 or 07850 832054

Under 13s Team Manager: Bob Cunningham Tel.01428 683970

**Fund Raising** We are proposing to run the fund raising draw event, the “200 Club” again this year. If we get 200 participants, there will be a draw each month, starting from end of July with 4 monthly cash prizes of £50, £30, £20 & £10. There will be 5 monthly draws in total with a “Grand Draw” at the last month. We are selling a number (Numbers from 1 to 200) for £10.00 each. If you are interested in helping us with our fund raising or would like a flutter, contact Bruce Sleep (01428 684454)

For any information about the club, please call the captains, Ian Houston (020 74502591) or (0775183264); Martin Johnson (01483 452811); Secretary: Bruce Sleep (01428 684454); our President, Mic. Coleman, ( 01428 682977),or our Welfare Officer Bob Cunningham on 01428 683970.

**Arthur Blackman, Chairman.**

### Fixtures for July and August

Month	Date	1 <sup>st</sup> .XI or 2 <sup>nd</sup> .XI	Opposition	Home/Away	Time
July	Sat. 3	1 <sup>st</sup> . XL League	Normandy IV	H	1.30
	Sat. 3	2 <sup>nd</sup> . XI League	Warnham	A	1.30
	Sat. 10	1 <sup>st</sup> . XI League	Plaistow	A	1.30
	Sat. 10	2 <sup>nd</sup> . XI League	Grafham	H	1.30
	Sat. 17	2 <sup>nd</sup> . XI League	Godalming III	A	1.30
	Sun. 18	1 <sup>st</sup> . XI League	Cranliegh III	H	1.30
	Sat. 24	2 <sup>nd</sup> . XI League	Rudgwick	A	1.30
	Sun. 25	Friendly XI	Ancient Mariners	H	1.30
	Sat. 31	1 <sup>st</sup> . XI League	Shalford	H	1.30
Aug.	Sun. 1	2 <sup>nd</sup> . XI League	Farncombe III	A	1.30
	Sat. 7	1 <sup>st</sup> . XI League	Normandy VI	A	1.30
	Sun. 8	2 <sup>nd</sup> . XI League	Merrow III	H	1.30
	Sat. 14	2 <sup>nd</sup> . XI League	Capel	H	1.30
	Sun. 15	1 <sup>st</sup> . XI League	Westcott Villagers	H	1.30
	Sat. 21	2 <sup>nd</sup> . XI League	Warnham	H	1.30
	Sun. 22	1 <sup>st</sup> XI League	Abinger	A	1.30
	Sat. 28	1 <sup>st</sup> . XI League	Oakwood Hill	H	1.30
	Sun. 29	2 <sup>nd</sup> . XI League	Dorking III	H	1.30
	Mon.30	Friendly XI	The Merry Harriers	H	1.30





## JULY JAPES AT THE MERRY HARRIERS



*"Grass is the cheapest plant to install and  
the most expensive to maintain." - Pat Howell*

Still a few tickets available for our 2 year anniversary celebration with  
top Rolling Stones tribute band **THE ROLLIN' CLONES**  
£15 (£12 for Hambledon residents).



**Wednesday 7th:** The ever expanding Book Club! Anyone wanting to join should  
contact Camilla on [camilla.edmiston@btinternet.com](mailto:camilla.edmiston@btinternet.com).

**Saturday July 10th:** The Rolling Clones. Join us for the second anniversary of  
our arrival with this brilliant Stones tribute band playing in the garden. £15 per head;  
concessions for Hambledon residents and regulars.

**Sunday July 11th:** Bastille Day Boules. A relaxing day on the boules piste to celebrate  
all things French. Stripey jumpers, berets and moustaches recommended. Starts 3pm  
comme ci comme ça. Stay on afterwards for the World Cup Final (let's hope it's not  
England v France).



**Tuesday 13th:** The very ordinary, quite easy, **GUARANTEED NO FOOTBALL QUESTIONS**  
**Quiz.** No theme, no football (or cricket or rugby) and some questions about flowers and  
fashion. For all you ladies who complained before! 8pm.

**Saturday 17th:** Operalicious! Dinner and Opera. Delight in an evening with Carmen 3  
course dinner and show £25.00

**Tuesday 20th:** Steak night – 2 rumps with chips or salad and a bottle of house  
wine for £25 per couple. Again, booking essential.

**STEAK  
& WINE  
NIGHT**



**Wednesday 21st:** Llama Open Day

**Wednesday 21st:** Cricket: The Merry Harriers v Ye Olde Ship Inn. Our annual  
thrashing at the Cricket Green by Colin & Julie's old local (who aren't as good as they  
were). Volunteers wanted for a 6pm start. Back to the pub for burgers to celebrate our  
crushing defeat.

**Tuesday 27th:** Beer and Food Matching Evening. Such a great success last time that  
we're doing it again.

**Saturday 31st:** Live Music. Acoustic set from Jay 8.00pm

**ALL THE WORLD CUP GAMES LIVE. FINAL ON JULY 11th 7:30pm**

20% off wine by the bottle from competing countries on their match days: France, Spain,  
Portugal, Italy, Australia, New Zealand, Chile, Argentina & South Africa.

And some tennis from south-west London.

If you would like to go onto our mailing list for future events, just leave a card or jot your email address  
down and hand it to one of the bar staff.

Tel: 01428 682883 email: [merryharriers@btconnect.com](mailto:merryharriers@btconnect.com)

# My Lord and my God

The Rev Michael Burgess continues his series on God in the Arts with *The Incredulity of St Thomas* by Peter Paul Rubens. It hangs in the Koninklijk Museum voor Schone Kunsten, Antwerp, Belgium

## GOD IN THE ARTS

The calendar allows us to celebrate St Thomas the apostle in this month of July as well as traditionally in December. Thomas is mentioned with the other disciples in all the Gospels, but it is in the 4th Gospel that he moves into the centre of the stage in his own right.

In chapter 14 he queries the words of Jesus that evokes the confession 'I am the way and the truth and the life' from our Lord. Then after the resurrection, when unconvinced by the accounts of the others, Thomas has that memorable and moving encounter with the risen Lord. In chapter 20 Jesus meets him in his doubts and his faith is restored.

*The Incredulity of St Thomas* is the subject of this month's painting by Peter Paul Rubens. Rubens (1577-1640) lived mainly in Antwerp, but his work displays a delight in sumptuous colour and the human form, which he would have learnt from his studies in Italy. This painting is from 1614 and is part of a triptych. The two outer panels portray the patrons who commissioned the work for their chapel in the Franciscan church in Antwerp

In this central panel, Thomas gazes in wonder at the marked hand of Jesus. He is there with a youthful St John and another disciple, who is looking at the face of the Lord. The light in the canvas comes from the risen body of Jesus, and the disciples move from the shadows into that light as their faith in the risen Lord grows and matures. In a moment, Thomas will raise his head and look up to Jesus. It is a momentous occasion in John's Gospel, for this meeting of master and servant, of Lord and disciple, is not just an exercise in overcoming doubt. It is an affirmation that only God can raise or be raised from death. Only God has the key to life. Thomas recognises Jesus fully and completely as he utters the words 'My Lord and my God.'

John ends his Gospel by saying, Yes, there was this moment of personal encounter, but believing without seeing is testimony to a more profound faith. Then it is not we who are invited to touch our Lord, but Jesus who can touch us. In the painting, one hand is turned towards the disciples, the other

reaches out to us. We may come to Jesus, like Thomas, with doubts and concerns, with worry and anxiety. Jesus will meet us in the honesty and openness of our faith to reassure us that he is, as he was for Thomas, the way, the truth and the life – our Lord and our God.

Thomas Dale's poem on *Unbelieving Thomas* ends with this verse:

Oh! If the iris of the skies  
Transcends the painter's art,  
How could he trace to human eyes  
The rainbow of the heart;  
When love, joy, fear, repentance, shame,  
Hope, faith, in swift succession came,  
Each claiming there a part;  
Each mingling in the tears that flowed,  
The words that breathed – 'My Lord! My God!'

You can see a copy of this painting at <http://www.peterpaulrubens.org/The-Incredulity-Of-St-Thomas-large.html>





# Sum, sum, summertime

**Proof that summer is really here – Guy Lemieux suggests a colourful salad that's easy to prepare. And, now that there are lots of fresh ingredients in the shops, how about making your own pesto**

## Summer tuna salad

*6oz radishes  
1 cucumber  
3 celery sticks  
1 yellow pepper  
6oz cherry tomatoes (halved)  
6 spring onions (thinly sliced)*

*3 table spoons lemon juice  
3 table spoons olive oil  
Two 7oz tins of tuna (drained and flaked)  
2 table spoons fresh parsley  
Salt and pepper to taste  
Mixed lettuce leaves to serve*

Cut the radishes, cucumber, celery and yellow pepper into small cubes. Place them in a large shallow dish with the tomatoes and the spring onions.

In a separate bowl, stir the salt and lemon juice then add the oil and pepper and mix together.

Coat the vegetables with this and set aside for 1 hour.

Add the flaked tuna and the parsley to the mixing bowl and toss together until all the ingredients are mixed in.

Arrange the mixed leaves on each plate and spoon the salad mixture on top.

Serve with French bread to mop up the delicious juices

## Pesto alla Genovese

*2 oz fresh basil leaves  
8 table spoons extra virgin olive oil  
2 table spoons pine nuts  
2 cloves of garlic (peeled)*

*Salt and pepper  
Juice of half a lemon  
2 oz freshly grated parmigiano-reggiano cheese  
2 table spoons freshly grated pecorino cheese*

Put the basil leaves, olive oil, garlic, salt and pepper and lemon juice into a food processor and grind until the mix is almost creamy. Add the pine nuts towards the end of the grinding so they retain their nutty texture.

You can keep this mix in the fridge for a few days or even freeze it to keep longer. If you freeze it, cover the top with olive oil to prevent the basil from turning black.



When you are ready to use the mixture, transfer it to a large bowl and stir in the grated cheese.

Cook enough pasta for four people—400 grams of dried pasta—until al dente, drain well then add the pesto.

Stir in over a low heat, perhaps adding a few cherry tomatoes for their colour as well as their taste (don't forget to prick their skins) and a couple of generous handfuls of spinach to wilt.



# Sit back, but do water

**Time to sit back and enjoy the fruits of your labour in the garden. But there are still other tasks to do in the garden, and a primary concern may be to assuring an ample supply of water for your plants.**

## Watering

- While the amount depends on the weather conditions, the primary rule is to water thoroughly and deeply and to allow the soil dry out between waterings. This will allow the plant's roots to grow deeper, anchoring the plant into the ground better. (Light, surface watering actually wastes water: it never actually reaches the root zone of the plant, but rapidly evaporates from the top inch of soil).
- The best way to tell if your plants are receiving enough water is to take a trowel or shovel and dig down a few inches. The soil should be moist at least 3 or 4 inches deep to reach the roots.
- With drought resistant plants, you won't have to water as often, but the principal of deep watering still applies.
- As the weather dries out, your container plants may need daily watering, especially if the pots are exposed to the drying sunlight.
- Push your finger into the soil in your container plantings at least once a day (more often on hot, dry days) to feel for moisture and be certain that plants are getting enough water. Apply water until it runs out the drainage holes.
- Try to do your watering during the early morning hours so that the leaves can dry off a bit before the hot sun hits them. Evening watering is only acceptable if the temperatures are warm enough to insure that foliage dries before the temperature drops at night. (Wet foliage makes plants more susceptible to fungus and disease.)

## Perennials, annuals, and bulbs

- Continue to dead head annuals to encourage continued blooming. Get a second bloom by cutting them back by half their height, and then fertilize.
- Fertilize roses need each month through summer
- Fertilize container gardens regularly with a liquid all purpose plant food.
- Chrysanthemums should be lightly fertilized every two weeks. Discontinue pinching your mums in mid month so they will be able to develop flower buds for the fall
- Sweet peas may tend to fizzle out with the hot summer weather, but with heavy mulching to keep the roots cool and moist you can prolong the flowering season by a few more weeks.
- Sow seeds of Hollyhocks, daisies, Foxgloves, Violets, Canterbury bells, and Sweet William into the soil now for next year.
- Take Geranium cuttings in late July to start plants for indoors during the winter months, and for planting in garden next spring.

## The Garden



## in July

## Shrubs and trees:

- Prune summer flowering shrubs for shape after flowering. Remove dead or diseased branches.
- Fertilize flowering shrubs like Rhododendrons, Camellias and Azaleas immediately after they have finished flowering with a 'Rhododendron' or 'Evergreen' type fertilizer.
- Dead head the developing seed pods from Rhododendrons and Azaleas to improve next years bloom. Be careful not to damage next year's buds hidden just below the pod.

## Fruits and veg

- Plant out successions of salad crops for continued harvesting throughout the summer. Sow seeds for cool-season crops directly into the garden by mid-July. Protect fruit from the birds with netting.
- Where crops have finished, replant with either a late vegetable crop, or a green manure of clover or vetch to help control weeds. Dig into the soil later, to add humus and nitrates.

## Lawn Care

- A brown lawn isn't necessarily a dead lawn. Grasses go dormant in drought, but will quickly return to life with the rain. If a lush green lawn is important to you, and you don't mind mowing, water it regularly, and deeply. In water shortage, let your lawn go dormant.
- Raise the cutting height of the mower. Taller grass cools the roots and helps to keep the moisture in the soil longer.

## Indoors plants/Glasshouses

- At all times keep your greenhouse well ventilated, and damp down regularly.
- In hot weather provide shade for delicate plants.

## Maintenance

- Keep a watchful eye on pests and diseases that they don't get to out of control.
- Be alert to slug and snail damage. These creatures will be hiding during the heat of the day, but will come out of hiding in the cool morning and evening hours or after a rain. Seek and destroy ALL slugs and their eggs!
- Change the water in your bird bath regularly, and keep it filled. (Standing water may become a breeding ground for mosquito larvae.)

## Rainbow Rhymes

Poems and Promises to cut out and collect.

Where shall we go for our holidays?

As long as there are trees  
I don't mind where we go,  
To Mablethorpe or to the moon,  
Or Alaska in the snow.  
All holidays are magical  
Near mountains, lakes or seas,  
Each place a perfect playground -  
As long as there are trees.

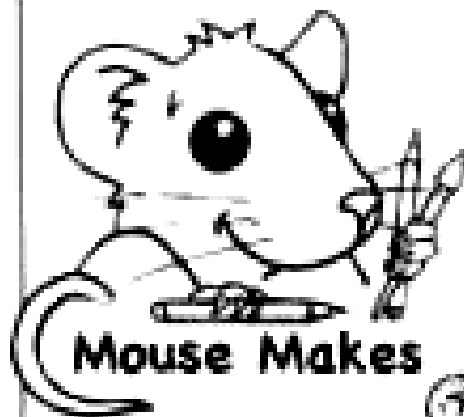
As long as there are trees  
With branches gnarled and twisted,  
Their fascination works on me  
And cannot be resisted.  
I have this strange compulsion,  
Like a recurring disease,  
It spreads through arms and legs, to brain,  
I *have* to climb up trees.

As long as there are trees  
I can make the world my own.  
I climb and perch, the master of  
My time-free travel zone.  
No-one knows I'm out in space,  
Or surviving treacherous seas,  
Exploring all the universe -  
They think I'm climbing trees!

Sol says:  
"Trees! You can  
imagine all sorts of  
things!"

"And all the trees of the fields shall clap their hands"  
Isaiah 55:12 (NIV)

Poem by Daphne Kitching, Picture by Elaine Hill, Coloured by .....



## The Large Crowd and The Big Picnic

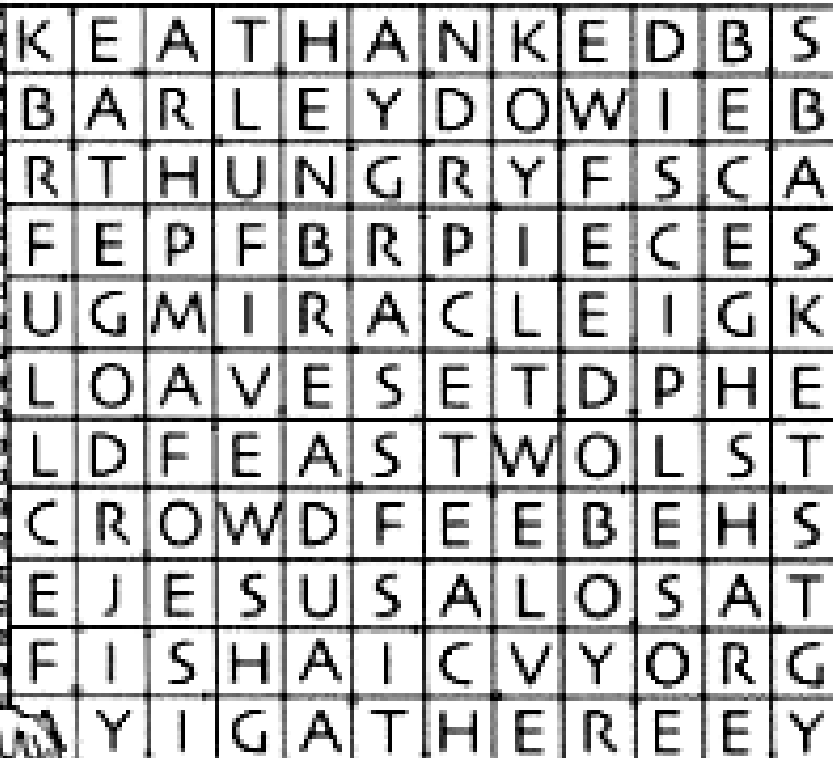
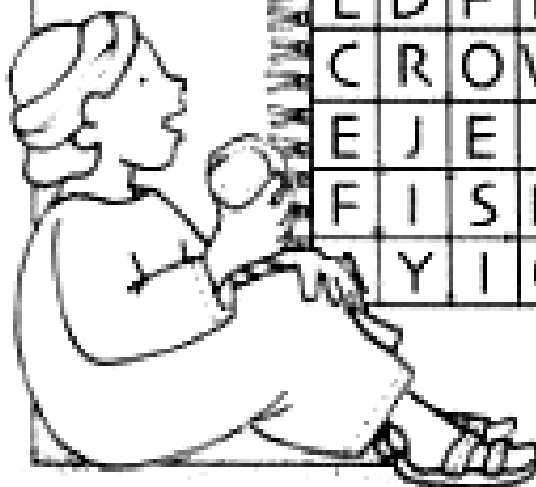
Thousands of people had followed Jesus to the other side of the lake to listen to his teaching.

All that the disciples had to feed them was **five** loaves of barley bread and **two** fish but Jesus took the bread and fish and gave thanks to God. They all had as much as they could eat and there were still **12** baskets of bread left over!

Read the full story of the feeding of the 5000 in John 6:1-15

Find these words on the picnic rug:

- BARLEY • MIRACLE • CROWD • TEACH •
- GRASS • GATHER • BASKETS • SHARE •
- BREAD • LOAVES • FEAST • SIT • TWO •
- DISCIPLES
- ATE • SAT
- HUNGRY
- BOY • EAT
- FIVE
- FISH
- JESUS
- PIECES
- GOD
- FULL
- FEED
- TWELVE
- THANKED





## BIBLE BIRDS

There are lots of birds in the Bible - Noah sent them out from the Ark to see if the flood waters had gone down, first a raven and then a dove (Genesis 6: 6-13). Elijah was fed by ravens while he lived in the desert (1 Kings 17: 1-8).

Mary and Joseph made an offering of 'a pair of turtle doves or two young pigeons' (Luke 2: 22-24) when they took baby Jesus to the Temple. When Jesus was baptised by John the Baptist, the Spirit of God descended like a dove (Matthew 3:3-17). That is why the Holy Spirit is usually shown as a dove. The dove is also a symbol of peace.



But my favourite bit about birds is Luke, chapter 12, verses 4-7. 'Aren't 5 sparrows sold for 2 pennies? Yet not one sparrow is forgotten...' It reminds us that God loves and cares for everything, even the smallest part of his creation.

## BIBLE BIRD WORDS

Some clues are in the first column, but can you answer these Bible questions all about birds? Which bird...

1. Didn't come back when Noah sent it out of the ark. (Genesis 7)
2. Flocks of these fed the Israelites in the desert. (Numbers 11)
3. Those who wait on the Lord will rise up with wings like... (Isaiah 40)
4. The first bird Noah sent out of the ark. (Genesis 7)
5. Saul hunted David like one of these in the mountains (1 Samuel 27)
6. Jesus said this bird would be at a scene of desolation (Matthew 24)
7. cost 2p for 5? (you shouldn't need a clue for this one!)



**What do you give a sick bird?**  
Tweetment.

**Why can't a duck fly upside down?**

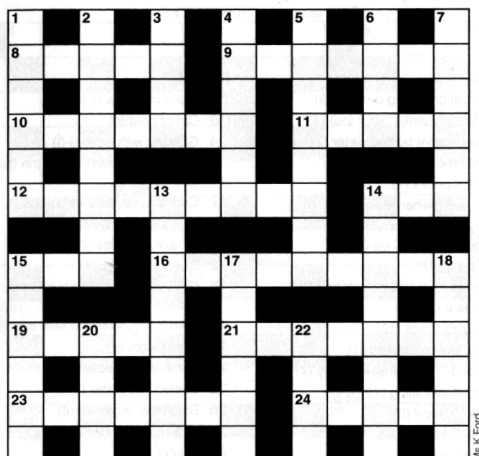


Because he'd quack up.



1) dove 2) quail 3) eagles 4) raven 5) partridge 6) vulture 7) sparrow

# Puzzle Page



## ACROSS

- 8 Sear (5)  
 9 Submarine's missile (7)  
 10 Item of jewellery (7)  
 11 Innocent of the world (5)  
 12 Popular pizza topping (9)  
 14 Except for (3)  
 15 Small cushion (3)  
 16 Dish of mutton, potatoes and onions (5,4)  
 19 Strongly desire (5)  
 21 Wrestling hold (4,3)  
 23 Criss-cross pattern (7)  
 24 \_\_\_ Sharapova, Russian tennis player (5)

## DOWN

- 1 Snoozing (6)  
 2 Fearless, unafraid (8)  
 3 Himalayan Bigfoot (4)  
 4 All-male party (4,2)  
 5 Wield (a weapon) (8)  
 6 Order of knights in the *Star Wars* films (4)  
 7 Trustworthy (6)  
 13 Outbreak of infectious disease (8)  
 14 Meat preparation and retail (8)  
 15 Predicament (6)  
 17 With parents closely related (6)  
 18 Native American's tent (6)  
 20 Fifth New Testament book (4)  
 22 Force associated with Sandhurst (4)

## Word Search

R	N	R	G	P	O	R	K	S	E	I	A	T	
E	E	I	E	H	C	T	I	P	I	P	F	R	A
I	Y	S	T	P	E	D	C	D	H	L	E	H	M
E	I	T	U	D	E	T	K	L	A	N	I	F	E
E	N	L	T	L	R	E	L	G	N	I	F	E	T
D	Y	S	I	R	T	A	K	I	D	L	E	T	I
N	E	N	T	E	O	M	W	L	B	V	F	U	E
U	E	S	O	D	P	E	N	A	L	T	Y	T	
O	R	E	B	E	P	I	H	S	L	O	E	O	A
B	E	H	U	R	F	W	S	Y	L	D	G	E	C
E	F	I	S	D	D	E	A	F	G	K	R	H	P
R	E	K	I	R	T	S	R	T	F	O	Y	E	E
T	R	M	R	R	E	N	R	O	C	O	A	H	B
S	T	V	R	D	A	E	A	S	A	H	F	L	L

## Easy Sudoku

					1	9		
		7	5	3			6	
5					6	1	3	2
1				4	7		8	3
	7						9	
2	5		8	9				7
6	8	9	3					1
	3			1	9	8		
		1	6					

© 2008 KrazyDad.com

## Intermediate Sudoku

						3		
4					9			1
7			2				5	
				2		8	4	
	4		3		6		1	
	7	6		5				
	6				7			3
3			5					2
		5						

© 2008 KrazyDad.com

Answers to all puzzles on page 30

# Useful Information and Telephone Numbers



## GP SURGERIES AND HEALTH CENTRES

**Witley** – The Surgery, Wheeler Lane, Witley GU8 5QR

<b>Tel:</b> Doctors	01428 682218
Community Nurses	01428 685249
Health Visitors	01428 685249

**Milford** – Hurst Farm Surgery, Chapel Lane, Milford GU8 4EG

<b>Tel:</b> Doctors	01483 415885
---------------------	--------------

Crossroads Surgery, Church Road, Milford GU8 5JQ

<b>Tel:</b> Doctors	01483 414461
Health Visitors & Community Nurses	01483 415564

**Chiddingfold** – Ridgeley Road, GU8 4QP

<b>Tel:</b> Doctors	01428 683174
Community Nurses	01428 683735

## HOSPITALS

**Royal Surrey County Hospital**

01483 571122

**Milford Hospital**

01483 782000

Equipment for short term use

Some items only required for a short time (usually 3 months) may be borrowed. Type of equipment available includes bed blocks, bed cradles, back rests, commodes, wheelchairs, bed pans, urinals.

Contact: Medical Loans Service, British Red Cross, Pines Business Park, Off Aldershot Rd

(10-12.30pm Mon-Fri, 10-11.30am Sat)	01483 532117
--------------------------------------	--------------

or Mrs Hayle, Weycourt Godalming (Open Tues 7.30-8.30 pm)	01483 416326
---	--------------

## POLICE

Neighbourhood Specialist Officer: PC Tracey Taylor

PCSO Dave Boxall	01483 630086
------------------	--------------

Email address	wswaverleysnt2@surrey.pnn.police.uk
---------------	-------------------------------------

Urgent calls	999
--------------	-----

Non-urgent and crime reporting	0845 125 2222
--------------------------------	---------------

## NEIGHBOURHOOD WATCH CO-ORDINATORS

Area 1	Mr R. Kilsby	Hydestile	01483 423637
Area 2	Mr A.G. Blackman	Church Lane	01428 683871
Area 3	Miss J. Woolley	Woodlands Road	01428 684213
Area 4	Mrs C. Pitt	Malthouse Lane	01428 682940
Area 5	Mr A. Hammond	Cricket Green	01428 683625
Area 6	Mr J. Tidmarsh	Lane End	01428 682067
Area 7	Mr I. Campbell	Feathercombe Lane	01483 860264
Area 8	Ms L Roberts	Hambledon Park	01428 685075
Parish Council Representative	Mr R. Vickery		01428 682036

## UTILITIES

Thames Water (Customer Enquiries)	0845 9200800
Southern Water (Customer Enquiries)	0845 2780845
Southern Electric (Emergency) 24 Hours	0845 7708090
Gas (Emergency) 24 hours	0800 111 999

## HAMBLEDON PARISH COUNCIL

Chairman	John Anderson	01428 682666
Vice-Chairman	Philip Underwood	01428 682742
Councillors	Jane Caie	01428 685258
	Derek Miller	01428 684362
	Stewart Payne	01483 425250
	Paul Pattinson	01428 682000
	Ron Vickery	01428 682036
Clerk	Jane Woolley	01428 684213
Surrey County Councillor	Dr Andrew Povey,	01483 267443
Waverley Borough Councillors		
	Liz Cable	01428 682640
	Adam Taylor-Smith	01483 555573

## GENERAL

Borough Hall	01483 523333
Cinema Borough Hall (Tickets & Information)	01483 523004
Library	01483 422743
Hambledon Village Shop is able to arrange deliveries	01428 682176
Hambledon Village Hall – for terms and bookings	01428 683588
Train Information	
Times and fares for all national services	0845 7484950

## GOOD NEIGHBOUR SCHEME

Lifts to medical appointments, collecting prescriptions for Hambledon residents without transport, ring 01428 682959. If no response within 24 hours please call 01428 682702

## VETERINARY SURGEONS

<b>North Downs Veterinary Group</b>	
37, New Road, Milford	01483 414747
<b>Rivendell</b>	
24, St Johns Street, Farncombe	01483 421833

In an emergency, ring either number

### Hambledon Village Shop & Post Office Opening Times

	Shop	Post Office	
<b>Monday</b>	9 – 5.00	9.30 – 12.30	1.30 – 4.30
<b>Tuesday</b>	9 – 5.00	9.30 – 12.30	Closed
<b>Wednesday</b>	9 – 5.00	9.30 – 12.30	Closed
<b>Thursday</b>	9 – 5.00	9.30 – 12.30	1.30 – 4.30
<b>Friday</b>	9 – 5.00	9.30 – 12.30	1.30 – 4.30
<b>Saturday</b>	9 – 1.00	9.30 – 12.30	Closed
<b>Sunday</b>	9 – 12.00	Closed	Closed



## Sudoku Solutions

Easy

3	6	2	4	8	1	9	7	5
9	1	7	5	3	2	4	6	8
5	4	8	9	7	6	1	3	2
1	9	6	2	4	7	5	8	3
8	7	3	1	6	5	2	9	4
2	5	4	8	9	3	6	1	7
6	8	9	3	2	4	7	5	1
4	3	5	7	1	9	8	2	6
7	2	1	6	5	8	3	4	9

Intermediate

6	2	8	1	4	5	3	9	7
4	5	3	8	7	9	6	2	1
7	9	1	2	6	3	4	5	8
5	3	9	7	2	1	8	4	6
8	4	2	3	9	6	7	1	5
1	7	6	4	5	8	2	3	9
2	6	4	9	1	7	5	8	3
3	1	7	5	8	4	9	6	2
9	8	5	6	3	2	1	7	4

## Word Search Solutions

R	N	R	G	P	O	R	K	S	E	I	A	T	
E	E	I	E	H	C	T	I	P	I	P	F	R	A
I	Y	S	T	P	E	D	C	D	H	L	E	H	M
E	I	T	U	D	E	T	K	L	A	N	I	F	E
E	N	L	T	L	R	E	L	G	N	I	F	E	T
D	Y	S	I	R	T	A	K	I	D	L	E	T	I
N	E	N	T	E	O	M	W	L	B	V	F	U	E
U	E	E	S	O	D	P	E	N	A	L	T	Y	T
O	R	E	B	E	P	I	H	S	L	O	E	O	A
B	E	H	U	R	F	W	S	Y	L	D	G	E	C
E	F	I	S	D	D	E	A	F	G	K	R	H	P
R	E	K	I	R	T	S	R	T	F	O	Y	E	E
T	R	M	R	E	N	R	O	C	O	A	H	B	
S	T	V	R	D	A	E	A	S	A	H	F	L	L

Result  
Goalkeeper  
Trophy  
Stopwatch  
PitchFinal  
Penalty  
Striker  
Corner  
Sideline  
Final  
Flag

Winger  
Handball  
Midfield  
Kick  
Save  
Score  
Goal  
Rebound  
Referee  
Substitute

ACROSS: 5 Singe 9 Torpedo 10 Earring 11 Naive 12 Pepperoni 14 But 15 Pad 16 Irish stew 19 Crave 21 Bear hug  
23 Lattice 24 Maria  
DOWN: 1 Asleep 2 Intrepid 3 Yeti 4 Stag do 5 Brandish 6 Jedi 7 Honest 13 Epidemic 14 Butchery 15 Pickle  
17 Inbred 18 Wigwam 20 Acts 22 Army

## Lo, I am with you always

Wide fields of corn along the valleys spread;  
The rain and dew mature the swelling vine;  
I see the Lord in multiplying bread;  
I see him turning water into wine;  
I see him working all the works divine

He wrought when Salem-ward his steps were led;  
The selfsame miracles around him shine;

He feeds the famished; he revives the dead;  
He pours the flood of light on darkened eyes;  
He chases tears, diseases, fiends away;  
His throne is raised upon these orient skies;  
His footstool is the pave whereon we pray....

*From a poem by John Charles Earle 1749 - 1818*