

Hambleton Parish Magazine



St Peter's Church



& Village News



July 2015

50p



PARISH CHURCH OF ST PETER, HAMBLEDON

Rector	The Rev Simon Taylor	01483 421267 simon.taylor@bhcgodalming.org
Associate Vicar	The Rev Catherine McBride Mervil Bottom, Malthouse Lane Hambledon GU8 4HG	01483 421267 catherine.mcbride@bhcgodalming.org
Curate	The Rev David Jenkins 6 Quatermile Road Godalming GU7 1TG	01483 416084
Curate	The Rev James Gibson 2 South Hill, Godalming GU7 1JT	01483 421267 james.gibson@bhcgodalming.org
Churchwarden	Mrs Elizabeth Cooke Marepond Farm, Markwick Lane Loxhill, Godalming, GU8 4BD	01483 208637
Churchwarden	Mr Alan Harvey 35 Maplehatch Close Godalming, GU7 1TQ	01483 423264
Assistant Churchwarden	Mr David Chadwick, Little Beeches, 14 Springhill, Elstead Godalming, GU8 6EL	01252 702268
Church Treasurer & Gift Aid	Dr Alison Martin Tillies, Munstead Heath Road Godalming GU8 4AR	01483 893619

Sunday Services

Full details of these and any other services are set out in the Church Calendar for the month, which is shown on page 5

The Church has a number of Home Groups which meet regularly during the week at various locations. Details from Catherine McBride Tel: 01483 421267

Alpha details and information from
The Rev Catherine McBride Tel: 01483 421267

Baptisms, Weddings and Funerals contact
Hambledon and Busbridge Church Office
Tel No: 01483 421267 (Mon – Friday, 9.30am – 12.30pm)

Where there is sickness or where a visit would be valued,
contact the Church Wardens

The Rector is normally off duty on Fridays

The Associate Vicar is normally off duty on Fridays

The nearest Roman Catholic churches are St Teresa of
Avila, Chiddingfold (Fr Chris Bergin 01428 643877);
St Edmund, Croft Rd, Godalming and St Joseph's,
Milford (Fr Michael 01483 416880)

**TO SUBSCRIBE, £5 per year
AND HAVE THE MAGAZINE
DELIVERED, PLEASE CONTACT
PAT WILLIAMS 01428 682455**

Copy deadlines for the August magazine

The deadline is **Thursday, 16 July**

Please send your copy to

John Hindley
Whitegates, Gasden Lane
Witley GU8 5RJ
01428 681423
email: jjhindley@gmail.com

Advertisers, please contact
Tony Parker
email: the.parkers@virgin.net
01428 683577



Vicar's Views – July

Hello Everyone

It's still the middle of June as I write this and I've been following, with interest, reports on events to celebrate the signing of the Magna Carta in June 1215.

King John was never going to win any popularity contests. A few years before he'd managed to upset the Pope, now he was dealing with a band of rebel barons, disgruntled about the taxes he'd imposed on them in order to raise an army to fight the French. The barons had taken control of London and were demanding changes in how England was governed. In the stand-off which ensued, John called upon the then Archbishop of Canterbury, Stephen Langton, to organise peace talks and mediate between the two sides. Under Langton's oversight the demands of the Barons were compiled into the document which came to be known as the Great Charter – The Magna Carta.

The Charter, to be implemented through a council of 25 barons, promised the protection of church rights, protection for the barons from illegal imprisonment, access to swift justice and a fair trial, and limitations on taxes that could be levied by the Crown.

Although the Magna Carta was to be annulled, rewritten and reissued over the years, it has gained a powerful symbolic significance as a cornerstone of English liberties and as 'the greatest constitutional document of all times – the foundation of the freedom of the individual against the arbitrary authority of the despot' (Lord Denning, 1965).

All this begs an interesting question - or at least one which exercised the extended McBride family in the run up to the General Election and one on which the vicar and her parents had to agree to disagree: should the Church get involved with politics?

It's a question which has raised its head in the news again, as I write today, as Pope Francis waded into the debate on climate change; to be met with perhaps predictable antipathy from some right wing American politicians.

For what it's worth, my own view is: if politics and the policies of government affect people, and the Church is supposed to be concerned for the welfare of people, then how can the Church not be involved with politics?

The Bible has a lot to say about how a society treats people and particularly the most vulnerable and that we should 'Learn to do right; seek justice. Defend the oppressed. Take up the cause of the fatherless and plead the case of the widow' (*Isaiah* 1.17) and the prophets regularly called the country's leaders to account. Jesus upped the ante even further, suggesting that whenever we respond to the needs of others it is as if we were doing it for him: "For I was hungry and you gave me something to eat, I was thirsty and you gave me something to drink, I was a stranger and you invited me in, I needed clothes and you clothed me, I was ill and you looked after me, I was in prison and you came to visit me." (*Matthew* 25.35-36).

I'm not saying the Church should be aligned with any one particular party – definitely not – but it should be prepared to 'speak truth to power' of every political persuasion. It hasn't always done this, to its shame.

So, I'm delighted if Bishops voice opinions about social issues, or Popes speak out about climate change. We are welcome to disagree with them, but at least it prompts the debate and hopefully challenges us to ask questions.

Archbishop Langton was not above a bit of political stirring himself and probably as much a politician as he was a bishop, but perhaps we should be thankful that he was. In a recent interview Nigel Saul, Professor of Medieval History at the Royal Holloway College, was asked by Andrew Watson, the Bishop of Guildford, 'So would it be fair to say that if the Church hadn't been involved in politics in the early 13th century, there would have been no Magna Carta?' After a moment's consideration, Professor Saul replied, 'If you were to press me for a simple yes or no answer', I'd have to say 'yes'.

Food for thought.

God Bless,

Catherine

Catherine McBride, Associate Vicar,
Hambleton and Busbridge

CHURCH CALENDAR

July 2015

5th July	9.00 am	Holy Communion (BCP)
5th Sunday after Trinity	10.30 am	Messy Church followed by BBQ
<hr/>		
12th July	9.00 am	Morning Prayer (BCP)
6th Sunday after Trinity	10.30 am	Holy Communion
<hr/>		
Saturday	8.30 am to 10.00 am - Prayer Breakfast in Church Rooms	
18th July	<i>A time to meet together for prayer: all are welcome</i>	
<hr/>		
19th July	9.00 am	Holy Communion (BCP)
7th Sunday after Trinity	10.30 am	Morning Worship with Baptism
<hr/>		
26th July	10.30 am	Combined Service, Morning Worship (CW)
8th Sunday after Trinity		
<hr/>		
And in August		
2nd August	9.00 am	Holy Communion (BCP)
9th Sunday after Trinity	10.30 am	Churches Together Service at Godalming Bandstand
		All welcome
		<i>(note: no 10.30am service at Hambledon)</i>

Services at St. John's, Busbridge

8.30 am	1st & 3rd Sundays	Morning Prayer
	2nd & 4th Sundays	Holy Communion
10.00 am	Every Sunday	"Classic" service in Church
		"Contemporary" service in Busbridge Junior School
		Groups for children of all ages in various locations – turn up and ask!
6.30 pm		Benefice Evening Worship

PARISH & PEOPLE



We have been saddened to learn that **Joan Elliott** has had a fall so soon after celebrating her 100th birthday. This had resulted in a broken wrist and Joan is very much in the thoughts of her Hambledon friends and neighbours as she copes with the difficulty of managing helped by her daughter and visits from carers.

Our good friend, **Dick Partridge**, celebrates his 92nd birthday this month. We were concerned for Dick who was in hospital in Swindon following a stroke and we are looking forward to some up-to-date news. Meanwhile we send our good wishes to Dick and Sylvie. We do so miss them from the village.

Many will remember the **Revd Stephanie Couvela** with affection and may be interested to know what she is up to, now that she is not at Scargill any more. Between July and September, she is very much looking forward to starting work as the Anglican Chaplain at Keele University, a campus university centred around an amazing chapel designed by George Pace, who also designed the chapel at Scargill.

Gay Mabley's grandson, Tom Clarke was diagnosed with Hodgkin's Lymphoma when he was aged 14, Hambledon and Busbridge churches prayed for his recovery. His mother, Sarah, was a member of the

Hambledon Youth Group and met her husband, Stephen Clarke, when she was working at *The Cellar* as Assistant Manageress. They married at St. Peter's. Tom is now nearly 23 and living in Southwark.

He decided to celebrate eight years of being cured by raising money for Lymphoma and Leukaemia Research. His aim was to run 5 kilometres every day for eight days, round a park near his home. A friend made a video of him in which he is running and explaining his aims. <https://youtu.be/7ZvmyU5MzIA> He has a page on the Just Giving website www.justgiving.com/tom5k and at the last count he had raised £2830. Well done!

Scottish Dancing enthusiasts will remember when **Graham Walker** used to organise classes and dances in the Village Hall whenever he could. He and his wife, **Kate (Creighton)** still own a house in Hambledon but he is retiring at the end of June and they will be leaving Abu Dhabi to come back to the UK. Their new address from 30 June will be:

Ashfield Old School House, Achnamara,

Lochgilphead, Argyll, PA31 8PT Visitors welcome! It sounds like the right place for their Scottish Country Dancing skills, which we all enjoyed when they lived in Hambledon.

An inspiring May Ladies Breakfast

Vicki Hinde reports the excellent talk given at the May breakfast, and invites all to the next one

Dear Ladies – As many of our regular guests know, we look forward to our quarterly breakfasts at the West Surrey Golf Club where we can relax amongst friends, meet new friends and very importantly have our breakfast served to us whilst listening to a guest speaker, and enjoy the panoramic views of the first tee at the West Surrey.

In May we were privileged to have Gail Miller from the Torch Trust as our guest speaker. Gail is a lady who has an abundance of energy and passion, this shone through in her speech and many of the audience were visibly touched by her story. Gail has thrown herself into the challenges and opportunities that have been her life's journey.

She had no experience of working with blind people but such is her strong faith that she prayed for guidance and help and God answered her many prayers at difficult times, it was an amazing story of true faith. Today you can see for yourself what a wonderful organisation the Torch Trust is, providing holiday accommodation for people with sight loss, please do take a look at their website www.torchtrust.org or go down to Hurstpierpoint and see for yourself, Gail and her team will make you feel very welcome.

On Saturday 18th July we will be welcoming Andy Poulson, a former actor, now Director of the Trinity Trust Team, a youth-work charity based in Godalming, www.trinitytrustteam.com **see page 11.**

A Celebration in Flowers Thank You!

A huge thank you to all those organisations, and indeed individuals, who enthusiastically responded to the invitation to contribute to the 'Celebration in Flowers' at St Peter's Church on the weekend of 20th-21st June.

The success of the occasion once again demonstrated that Hambledon is always capable of rising to meet any challenge. If any village can claim to have a heart then surely our village should be near the top of the list.



There will be full coverage of the event, with pictures, in the August edition of this magazine



St Dominic's School Summer Fête & DOMFEST

Saturday 11 July, 12 noon-6pm, on the school's hill-top site

LIVE MUSIC EVENT

featuring talented local musicians, including The Surrey Ukeaholics, live bands, choirs and singers. Ukelele workshops & drum workshops.

BBQ, Cream Teas, Pimms & Beer
Tents & Other Refreshments

CHILDREN'S ACTIVITIES:

inflatable army assault course + mega-slide
interactive demonstrations & competitions by Southampton Jaguars Inline Hockey Team
Tattoo and face-painting Tractor rides

Stalls, Raffle, Bottle Tombola

Any donations for the raffle and/or bottle tombola would be gratefully received.

We are proposing to offer a **guided tour of the school**. To register your interest: Please contact us on 01428 684693 or email office@stdominicsschool.org.uk

Please join us for a fun- and music-filled afternoon for all the family and support our wonderful school.

HAMBLEDON



PARISH COUNCIL

At its annual meeting on 26th May the Parish Council elected John Anderson as its Chairman, and Philip Underwood as Vice-Chairman.

Raymond Smith was reconfirmed as the internal auditor of the annual accounts and the following appointments were made to Trustees of

- Hambledon Almshouses: Karen Jones & Mike Parry
- Hambledon Nursery School: Stewart Payne
- The Village Hall Committee: Mary Grove.

Standing orders and financial regulations were also reconfirmed and amendments were made as necessary to Councillors' registers of interests.

Assigning the portfolios

The annual accounts for 2014-5 were signed off and have been submitted for review by the external auditor.

It was agreed that the Parish Council should contribute an arrangement to the celebration in flowers at St Peter's Church and to invite Jenny Holford and Alison Martin to the next meeting to discuss the provision of defibrillators within the village. One has already been purchased by the Church but it could well be appropriate for a second one to be available in as widely scattered a village as Hambledon.



HAMBLEDON
COMMUNITY FUND

Hambledon Community Fund is designed for just that – looking after the projects and people needing it, as Fund Panel Chair Julie Llewelyn, with support from Community Foundation for Surrey, here describes

Looking after locals

The Hambledon Community Fund was set up with the sole purpose of creating a permanent, sustainable fund, specifically for the benefit of Hambledon and its residents. By working in partnership with the Community Foundation for Surrey, we offer a fund that enables and encourages local giving so that as a village we can develop a greater capacity to respond to local issues.

It encourages the efforts of the many existing village groups, by offering a fund that can make grants to help meet local needs, not competing with them. The Fund was one of the first in a series of Area Funds held within the Community Foundation and has inspired other villages, towns and boroughs within Surrey to come together and support their local communities in the same way.

We have already awarded over £12,000 to local community groups supporting and improving village life; recent grants have supported:

- the refurbishment of the village Almshouses
- the purchase of a plinth for a viewpoint map on Hambledon Common
- improved disabled access to the new Hambledon FC Clubhouse

Hambledon Community Fund needs you!

Founding Panel Member Katherine Evans has unfortunately had to step down since moving out of the village. If you are interested in becoming a panel member or would like to find out more about how you can be involved in supporting Hambledon contact Fund Panel Chair Julie Llewelyn on 01483 428429

Apply for funding Applying for funding is easy! We are looking for applications for funding to continue to provide services to local residents or to start new initiatives.

1. For funding requests under £2,000 there is a quick one page 'Small Grants Form'

2. For grants over £2,000 or to talk through your funding queries, simply contact the Community Foundation for Surrey on 01483 409230 or one of the Fund panel members.

Donate to the Hambledon Community Fund Whilst we try and support as many organisations as possible, we are limited by the funds we have available. By donating to the Hambledon Community Fund you can **help us ensure funding gets to where it is most needed.** The Hambledon Community Fund is a permanent fund that people who love Hambledon can either donate to now, or leave a legacy to in the future. Should you wish to donate, simply send a cheque made payable to the Hambledon Community Fund to the Community Foundation for Surrey, address below*

Who to contact?

Fund Panel Chair, **Julie Llewelyn**, 01483 428429

***Community Foundation for Surrey**
1 Bishops Wharf, Walnut Tree Close,
Guildford, GU1 4RA
01483 409230, info@cfsurrey.org.uk
www.cfsurrey.org.uk/hambledon





Award for Shop Volunteers

Amidst all the fresh food
Stewart Payne writes
about the Award



Hambledon Village Shop volunteers are celebrating winning the Queen's Award for Voluntary Service as they await a presentation ceremony as guests of the Lord Lieutenant of Surrey.

The award is the highest given to volunteer groups throughout the UK and recognises their outstanding contribution to local communities. It was created by the Queen to mark her Golden Jubilee in 2002 and has an equivalent status for groups as the MBE has for individuals.

For Hambledon it acknowledges the hard work and dedication of many villagers since the shop reopened as a community-run venture in 1992.

The award will be presented by Dame Sarah Goad, Lord Lieutenant of Surrey, the Queen's representative in the county, at a ceremony later this year.

The presentation includes a certificate signed by the Queen and a commemorative crystal. Dame Sarah said the award reflected the "extraordinary levels of volunteering and selfless contributions that make a real difference to communities" and recipients "deserve our gratitude and congratulations".

The Award's Chair, former broadcast journalist Martyn Lewis CBE said: The judging panel for this year's awards were struck by the quality and breadth

of all the successful groups. The thousands of volunteers who give up spare time to help others in their community and to help solve problems, demonstrate the best of democracy in action."

Hambledon Village Shop closed as a privately-run business in March 1991. The following year several villagers banded together to promote the idea of reopening it as a community venture. Supported by other residents £15,000 was raised towards refurbishing, re-fitting and stocking the shop.

It was reopened on November 14th, 1992, by the then local MP Virginia Bottomley, becoming one of the first community-run Post Office and stores in the country. It has been in business ever since, with a small number of paid staff, mostly part time, supported by dozens of volunteers on a rota system.

Along the way the Hambledon Village Trust was created and it purchased the premises from the previous owners, securing its future and becoming landlord.

In 2012 the shop celebrated 20 years of trading. Today it is at the heart of the community, offering essential Post Office services to villagers, a wide range of provisions including a deli and farm shop, and serving fresh food and drinks to locals and the many visitors it now attracts.

Jubilation at The Queen's Award

Writes Tim Parker, Chairman, and also about a change of constitution

See also pages 26-27

The volunteers and staff of the Hambledon Village Shop are delighted to have been honoured with the Queen's Award for Voluntary Service. When the news came through there was jubilation behind the Deli, cheering from behind the till and quiet grins of satisfaction behind the Post Office counter... There's no doubt we were surprised, but, on reflection, there was general agreement that when added up, the many long hours of unstinting service since 1992, by many wonderful people, amounted to quite an achievement. So many volunteers have signed up over the years and have performed many different tasks – from mixing milkshakes to stacking shelves to posting precious parcels. In fact the average number of serving volunteers has been consistently above 30 and the total

voluntary hours worked since 1992 has been around 57,400 hrs! (That's 120 man-years, or 120 woman-years!).

There will be a presentation of the award to all volunteers and supporters at a date shortly to be announced. The presentation will be accompanied by a little celebration at the Shop! We look forward to the future with confidence with such a bed-rock of support.

The Shop has converted to a Community Benefit Society*, owned by local residents for the benefit of local residents, and will only survive if volunteer support remains as strong as ever. Certainly the loyalty and enthusiasm so far demonstrated gives us all great hope and encouragement! **See pages 26-27*

What's happening . . . in and around the village



Hambletots!

We are a friendly, local baby and toddler group who meet on Wednesday mornings in Hambledon Village Hall from 10-11.30am



Hambletots will be on 1st, 8th and 15th July. We then break for holidays until 9th September

We have toys for all ages, a baby area and we organise a craft activity for the older children. Mums, dads and carers with children are welcome along, even if they can't make every week.



The cost is £1 for each child under a year and £2 for each child over a year.

Come and meet other local parents, carers and children over a cup of tea or coffee please call **Anthea Edwards 01428 684369** for more information



WAGS

Our next meeting will be at The Merry Harriers on Wednesday 15th July at 3pm We look forward to seeing you there



Mary Rose talk on Monday 20th July

The Prime Time event is an opportunity to hear about the history and preservation of King Henry VIII's warship, the Mary Rose. Our speaker will be Trevor Sapey from the Mary Rose Trust in Portsmouth, who will be showing some of the interesting artefacts that were recovered from the wreck. We offer an open invitation to this fascinating talk to the whole community on Monday 20th July at 2pm. It will be followed by tea and cakes.

This is a free event but donations to the Mary Rose Trust would be welcome. In Busbridge Church Centre. Contact: Penny Naylor at the church office or via email: penny.naylor@bhcgodalming.org for further details.



Coffee Morning Tuesday 21st July at 11am

in the Church Room and the third Tuesday each month

All welcome: do come More info: Jacqui Rook 01428 684390



AN EXCEPTIONAL FAMILY WEEKEND

Wings & Wheels

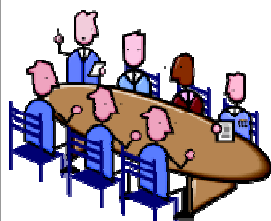
HELPING RAISE MONEY FOR:
BROOKLANDS MUSEUM
IN SUPPORT OF
HELP for HEROES

DUNSFOLD WINGS & WHEELS
29th & 30th August 2015

- 5 Hour Airshow • 2 Hour Motoring Show
- Military Vehicles • Stunt Zone • Retail Village
- Evening Entertainment • Free Parking

www.wingsandwheels.net

HAMBLEDON VILLAGE HALL MANAGEMENT COMMITTEE



Some dates for your diaries: The Management Committee are organising the following fund raising activities in the future (and distant) future:

14 November 2015 **A Quiz (and Chips) Night** with Bill Dann as quizmaster.

16 April 2016 (subject to final confirmation)

'Traditional' Jumble Sale (sorry cannot accept any electrical items).

So, start revising now for November and don't throw anything away until April.

Further details to follow later in the year. Paul Vacher, Hon. Secretary

In June, we were fascinated by the NGS garden of one acre, remodelled from a 1960s Chelsea Show garden, its huge rocks having been crane-lifted over the bungalow.

On Thursday 2nd July we are pleased to welcome **John Postill** who, having retired from Busbridge and Hambledon Church some years ago, then shared in the ministry of Shottermill Church. He has now done full circle – it's like he never left! John will talk about his journey **'From Hull to Hambledon'** and share some of his passions, which include Hull City football and Yorkshire County Cricket clubs. John always has interesting and amusing anecdotes to add humour to his talks. An entertaining evening and we look forward to seeing you at 8pm in the Church Centre.



On Thursday 6th August our outing is to **Loseley House and Park**. More details in August Magazine
Membership fee is £18 per year and *non-members* £5 per evening. *Membership covers:* gifts for speakers, welcome drinks & nibbles plus tea or coffee after the meeting and raising funds for our chosen charity (this year Nazareth Way, promoting work of prison chaplaincies in Surrey, particularly the women's prison HMP Send). For more: Janet Harvey 01483-423264, *Kate Kaye 01483-415296 or katekaye2@btinternet.com, or www.bhcgodalming.org/groups

A MASKED MUSICAL FUN EVENING

SATURDAY 4TH JULY

7.30–11 PM

In aid of The Cellar in the grounds of
The Old Farmhouse Elstead GU8 6DB



A Musical Extravaganza

featuring multiple artists including

Godalming Gospel Choir • **The Luard Trio** • Chris Munroe • **Kai Choi**

Mediterranean buffet • Cash Bar • Ice-Cream station

Tickets including a Welcome Drink & Buffet £20 each from The Cellar Café in Godalming

LATEST NEWS: The Godalming Community Gospel Choir have won through to the *'Songs of Praise Gospel Choir of the Year 2015'* finals and will perform publicly on Saturday 18th July

for the first time their two songs for BBC 1 Don't miss this opportunity to hear them first!

Other artists will play American/Gershwin to celebrate US Independence Day and much more

Tickets are selling fast – if you would like to join the 'Hambledon Group' please contact:

Vicki Hinde: *via* Vicki.hinde@btopenworld.com or 01428 682153

Come along to our next HAMBLEDON LADIES' BREAKFAST

Saturday 18th July, 8.30-10am at West Surrey Golf Club, Eton

Guest Speaker: Andy Poulson of Trinity Trust Team "From Advertising to Evangelising"

Dear Ladies, On Saturday 18th July we will be welcoming Andy Poulson who is a former actor, theatre company director, teacher, copywriter and advertising agency director. Brought up in a church going family, he described himself as a 'middle lane' Christian until he attended a residential Christian event in 2005 and had an encounter that radically changed his life. An experienced speaker, Andy will chart this journey from advertising to evangelizing, sharing the challenges and rewards



and he will also talk about his current role as Director of the Trinity Trust Team, a registered youth-work charity based in Godalming. Andy is also near completion of his first book – I am sure we will be in for a fascinating talk.

We look forward to welcoming you to the West Surrey Golf Club where you can relax and

chat amongst friends whilst having breakfast served to you. **Vicki Hinde**

Ladies Breakfast Team vicki.hinde@btopenworld.com

Tickets £8 available **only up to Tuesday 14th July**, from Sue Blackman 01428 683871, or the Village Shop. All Welcome from Hambledon and Busbridge



Hambledon's Tea at the Top



14 June 2015



Tea at the Top group photo

They plodded, skipped, or staggered up the hill to The Viewpoint, so nobly set up last year, and did that rather English thing, of taking a cup of tea – and cake, as Philip Underwood here describes with photos

On Sunday 14 June, as part of the LiberTeas celebrations, 40 citizens of Hambledon gathered at the top of the Common. They drank tea (or orange) were provided with cake and listened to a short speech about the Magna Carta and what it meant to Hambledon. They learnt that the present Lord of the Manor could have had much stronger powers over his people had not the principles of this Grand Charter been employed, and that in the recent Parish election the incumbent members had been returned en bloc, thus indicating the will of the people.

Many of the attendees were in their mid 80s and a special thanks to them for the effort of walking to the top, and adding their experience to the discussions.



Philip talks about the event

Discussions



The Lord of the Manor presiding

MAGNA 800th CARTA Celebrations 15 June 2015

The ceremony marking the 800th Anniversary was at Runnymede, as Philip Underwood here describes

Following on from our humble but memorable LiberTeas celebration, Pauline and I were invited to attend the more formal event at Runnymede the next day. So up and away by 6.30am, taken by coach from Windsor racecourse to Runnymede meadows, and having an allocated seat in front of the giant Glastonbury type stage.

The orchestra was the Royal Philharmonic and we were treated to a lavish concert interspersed with ballads, poetry and a flag parade, all relating to the Magna Carta. The local schools and the Royal Holloway College had a large input.

The parade of Magna Carta flags



Re-dedication of the Magna Carta memorial

Then we had the speeches, from The Archbishop of Canterbury Justin Welby, the PM David Cameron, US Attorney General Loretta Lynch, and Lord Dyson, with unveilings performed by HRH Prince William and Her Majesty the Queen.

The event was rounded off with a picnic lunch provided by the National Trust and a flypast of the Red Arrows.

Two fine days for us – thanks to Hambledon! (and those barons long ago?)



HM The Queen and the memorial plaque

Photos: Philip Underwood and Mercopress

The important guests



Up the Pub

Ross, writing during one of June's few damp days, dreams of Christmas, sticks up for the Publican's lot and looks forward to celebrating with GWJ
(Very happy birthday, Jan - Ed.)

Crumbs! July already, and I still have not done my Christmas shopping! As I write this in early June, it is "slinging it" down with rain and my car is buried under a pile of chestnut blossom, so who do you think will be delighted, when I tramp it all through the house? Correct answer, well done – I suppose I could learn to walk on my hands.....

Did you read that letter from "name and address supplied" about the Harriers in last month's mag? Well G.W.J. and I have done the rounds over the years and Mr N.A.A.S., I suggest that you pop in to the Noah's Ark at Lurgashall, the Stag at Balls Cross, or even the Crown at Chiddingfold, and all are of comparable prices to the Harriers.

I can make no comment about Prezzo, as I know nothing about it. Also I am amazed, that the village where he lives, can support 5 pubs! I have just driven home from Dorset, and we have counted 29 closed pubs and that was on the main road. Where we stayed in Beaminster, there were 3 pubs, Sunday lunch in two was £13.50 and a pint of beer (Palmer's 200) £3.85, and a glass of house red £4.00. In the other pub (called a hotel), Sunday lunch was £17.90, a pint of beer (blooming Doombar) £4.00 and a glass of house red £4.50.

Big birthday for G.W.J in July!
Enjoy our village. and our pub!

Ross



'Hi. You must be "mature gent interested in gardening and Olde Tyme dancing". I'm "slim, bubbly blonde looking for shared fun"'



Checking Hambledon's health

Worried about the effects of your lifestyle? Concerned about weight gain? Not eating healthily? Then – assuming you're one of Hambledon's 'greyer' community – get yourself a free health check, as explained below

If you're aged between 40 and 74 and have not had a stroke or been diagnosed with heart disease, high blood pressure, kidney disease or diabetes, then you might be eligible for a free health check. Having an NHS Health Check will better prepare you for the future and will enable you to take steps to maintain or improve your health.

Free NHS Health Checks will be taking place in the Church Room at St Peter's, Hambledon on Saturday 11 July between 10am and 5pm.

Why you should have an NHS Health Check?

As you get older, the risk of developing illnesses, such as heart disease, stroke, type-2 diabetes, kidney disease and certain types of dementia, increases. Some factors will put you at even greater risk:

- being overweight
- being physically inactive
- not eating healthily
- smoking
- drinking too much alcohol
- high blood pressure
- high cholesterol.

Both men and women are at risk, but the good news is that these conditions can often be treated. The NHS Health Check will help you identify your risk earlier.

What happens at the check?

The check will only take 20-30 minutes and will involve the health professional asking a few simple questions. These will include questions about your

family history and the lifestyle choices that may be putting your health at risk. The health professional will also make a note of your height, weight, age, sex and ethnicity as well as test your blood pressure. Finally, they will do a simple finger prick blood test to check your cholesterol level.

What will happen after the check?

The health professional will talk you through the results and explain what they mean, giving you advice on how to lower your risk and maintain a healthy lifestyle. If the check reveals high blood pressure or a risk of developing type-2 diabetes, you might need some further blood tests to investigate this. The health professional will be able to tell you more. They may suggest that there are lifestyle factors you could change such as stopping smoking or losing weight that would help to reduce your risk. In addition, you may be prescribed further treatment or medication that will help you to maintain your health.

How do I get an NHS Health Check?

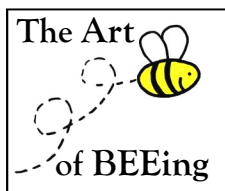
If you are aged between 40 and 74 and haven't previously been diagnosed with any of the above illnesses, you can book a check for 11 July by contacting Carol Searle, Waverley Health & Wellbeing Manager on 07505 134467.

Don't forget that even if you're feeling healthy, it's still worth having your check because the health professional can help you reduce your risk of developing these health problems in the future.



Stephen Dean and foxgloves on Hambledon Common





Honey taps are off in the “June Gap”

June Gap can mean Queen Gap for some, or aggressive queens needing Henry VIII treatment; but lucky others like those Wayne seems to have, are fancy girls who are skiddadling to join the mega-mile high club

After a hectic month of swarming, things seem to have settled down for the time being in our garden. Although temperatures have not been fantastic it has been dry enough to allow all 7 virgin queens to take to the sky in search of their best suited men. I suppose there is a good reason why they call her ‘Queen’ because this little lady has a romantic interlude with as many as 10-15 male (drone) bees in one flight. Whilst the outcome for the returning mated queen and her colony may look rosy, following these maiden flights, for her male bee partners the consequences of joining the Mile High Club comes at a high price – death!!

The outcome of all this high altitude luv is that I have now doubled my stock of colonies within one month and having to place orders for more equipment. As with nature, some of these new queens may not continue to lay eggs in the way they started and that’s the benefit of having a few extra to hand as I intend to reduce them to perhaps 6-7 by the year end, taking my strongest queens into the winter. So far the extra stock of queens has already had its benefits. New beekeeper, Nigel Hobson, has discovered so far that beekeeping has its challenges and whilst you may have read the latest book on managing your bees, the bees haven’t. Hopefully we’ll have his problem of queenlessness sorted within the next 1-2 weeks and that he will be able to get some summer honey for his efforts.

Fellow beekeepers, Sean and Kat, also have a problem that needs dealing with this summer. Over the last few years, their bees have cross bred; resulting in a strain with an allegedly aggressive temperament that can only be examined using smoke, chainmail and riot gear. It’s not a pleasant experience and plans are afoot in the next few weeks to eliminate these queens and replace them with bought-in mated queens that come from a reputable supplier. You see, the queen dictates the temperament of the hive through her offspring and so an unpleasant queen will almost always produce unpleasant worker bees. Some beekeepers believe the more aggressive the colony the more honey they bring in. I say, life is too short to take some pain every time you open the hive! Fortunately I have been blessed with very gentle bees with exception of one lot which I intend dealing with shortly.

So the spring bounty of nectar offered by the Sycamore, Cherry, dandelion etc., is over and now we’re waiting for the bramble, limes, clover and sweet chestnut to kick-start the main summer flow. This dry period in-between is known in the UK as the “June Gap”.



There is very little nectar around being offered in volume by any plants or trees and so the bees rely on their spring harvest to maintain the queen’s laying rate as she heads towards her peak lay in July. For those young colonies without the benefit of the spring accumulated honey, they have to be fed white sugar syrup. The 30kgs of sugar I bought recently has nearly all been consumed in two weeks – ok, so some was used to make Elderflower cordial and Elderflower bubbly! – but most went to the bees.

Looking around the fruits of our gardening I think the flower that is offering the most amount of forage to all varieties of bees is the Nepeta. It’s a fantastic cottage garden plant. Other well visited plants have been the wild geraniums, mauve wallflowers, echiums and the buddleia globosa.

I touched on the Elderflower cordial and bubbly making earlier. This cordial has got to be the easiest drink to make this summer and costs a fraction of the supermarket price and much tastier. If you haven’t tried, diarise it for next year.

Next time I’ll let you know how well the honey-flow progressing.

Contact: artofbeeing1@gmail.com

Lowdown on Shed & Garage Security



This month PCSO Dave Boxall writes about outbuildings. Although we are experiencing a low number of non-dwelling burglaries in the villages at the present time, the local Neighbourhood team would like to pass on advice in regard to shed and garage security.

If you keep anything of value in your shed or garage, invest in a suitable lock to BS (British Standard) specification, it is surprising just how many locations we attend following a shed burglary to see a door that was either not secured at all, or has such a small lock on it that it really isn't worth having, protecting the contents which are of a high value.

Also, as we all know, wooden doors do not last for ever. I have seen locks and hasps hanging on for grim death to doors and frames that were past their best some years previously.

Shed and garage windows are a perfect way for the criminal to see what you have inside. A cheap roll of opaque film from the DIY shop, stuck to the inside of the glass prevents this.

Being opaque, it doesn't affect the light coming in, but it stops the undesirable seeing if you have anything worth taking.

Tools, bikes, garden power tools, they are all worth a lot of money, irrespective of what other myriad of items the shed or garage holds. Please don't become a victim of crime.

Police Community Support Officer David Boxall
Surrey Police Safer Neighbourhood Team – Milford, Witley, Hambledon & Brook

Surrey Police: 101 Extension: 30086

Direct Dial: 01483 630086, Mob 07967 986110

www.surrey.police.uk Fax: 01483 634860

Please note I work a shift pattern and it may take up to 4 days to reply to your email. For non-urgent notification of a minor crime you can also use the online crime reporting facility available at www.surrey.police.uk/minorcrime For local news, dates of local surgeries or next Police-Public panel meeting visit www.surrey.police.uk/neighbourhood

Put a stop to wildlife crime

Also from PCSO Dave: *Regret that this did not appear in June issue, because of software i e human error- Ed*

Just recently we had an occurrence of “lamping” in the parish, so I thought that the following information would be relevant. I am writing about the issue of wildlife crime,

Wild animals are an important feature of our countryside but they can sometimes cause significant damage to farmland. Where the population of a particular species causes unacceptable damage, preventative measures, such as fencing, may be the best option. However, in some circumstances – where the law allows it – control may be necessary.

Some mammals have no legal protection and can be controlled by legal methods, but others are protected by law and cannot be trapped or killed without a licence from Natural England. These animals include: badgers; rabbits, hares and grey squirrels; mice, rats, moles and edible dormice; wild deer; wild boar; otters;

Wildlife crime needs to stop

- It reduces the numbers of rare animals and plants
- It causes animals pain and suffering
- It can be linked to other serious crimes

What is Wildlife Crime?

People buying, selling, harming or disturbing wild animals or plants that are protected by law. Examples include: smuggling protected species and their parts (such as tortoiseshells, ivory and caviar); illegal trading in endangered species; poisoning animals; disturbing or killing wild birds or taking their eggs; poaching

game, venison and fish; disturbing, injuring or killing bats, and damaging or obstructing their roosts; taking protected plants from the countryside. It also includes people being cruel to animals through, for example, the use of poisons, snares or explosives; violence towards badgers, which includes burying them alive or allowing them, to be ripped apart by dogs.

How you can help

If you witness a suspected wildlife crime call 999 immediately and ask for the police. For all other enquiries, call your local police control room on 101. For your own safety, do not approach suspects or touch anything at the scene.

If possible, give information on: what is happening; the exact location (a map reference or local landmark can be useful); the date and time of the incident; who is involved (eg, the number of people, clothing worn, tools being carried, use of dogs); the make, colour and registration number of any vehicle involved.

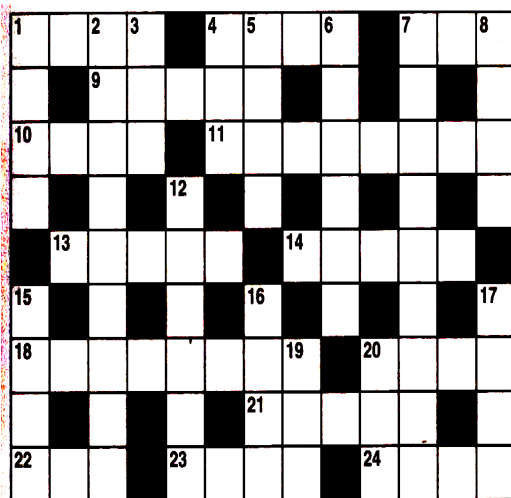
If it is safe to do so, take photos, which may be used as evidence. Remember to ask the police for an incident reference number and for a Wildlife Crimes Officer to be made aware.

Contact numbers for reporting wildlife crime:

If you witness a wildlife crime, phone 999. If it is a protracted enquiry or something that has already happened, call 101 to report the crime and make sure you ask that a Wildlife Crimes officer is made aware.

Puzzle Page

Crossword



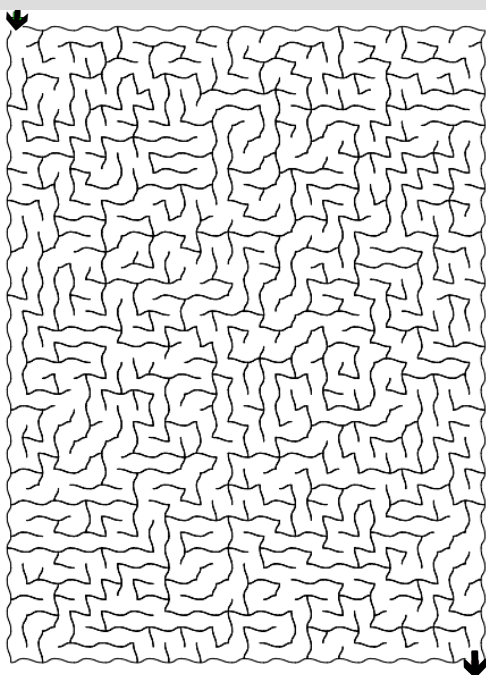
ACROSS

- 1 Means of entry (4)
 4 Lion's neck hair (4)
 7 Moisture formed by condensation at night (3)
 9 Causing ruin or death (5)
 10 Slight quarrel (4)
 11 Facial lotion or scrub (8)
 13 First name of conductor ____ Previn (5)
 14 Far from taut (5)
 18 Animal that kills to sustain ____ itself (8)
 20 Blunt-nosed rodent (4)
 21 Thick soft quilt used instead of blankets (5)
 22 ____ Alamos, New Mexico town (3)
 23 Give the impression (4)
 24 Undernourished (4)

DOWN

- 1 Customs charge (4)
 2 Transgressors (9)
 3 Battle of Britain heroes (init)(3)
 4 Type of computer (3)
 5 Partner in a conflict (4)
 6 Facilitate, make possible (6)
 7 Coarse tea towel (9)
 8 *Bride*____, 2009 Kate Hudson romcom (4)
 12 Sleep visions (6)
 15 Milky birthstone (4)
 16 Went on a horse (4)
 17 Very interested (4)
 19 Distilled drink (3)
 20 James Herriot's profession (3)

Maze



Word Search

On 3rd July the Church remembers St Thomas, also called Doubting Thomas, because he would not believe his fellow disciples' news of the Resurrection. But 'doubt' did not mean that Thomas did not love Jesus! Only a few weeks before, Thomas had urged his fellow disciples to follow Jesus to see Lazarus in Bethany, despite danger from the Jews. "Let us also go, that we may die with him." (John 11:16)

Instead, Jesus brought Lazarus back to life. Thomas was sometimes very confused about just where Jesus was headed. But in John 14:5 Jesus untangled his confused commitment: "I am going to my father", and "No one comes unto the Father but by me." Finally, after the Resurrection, Jesus appeared to Thomas, showing him the wounds of his crucifixion. Thomas was electrified, and his response immediate: "My Lord and my God" (John 20:26ff). Thus Doubting Thomas' honest doubts, turned to honest faith, have become a reassurance for thousands of people down the centuries.

X J W D F B L U N G C I H S
 L D R A I T F I D U T H I U
 N O I R U E R C F A T H E R
 L T V F O L L O W E D G E A
 H L B E T H A N Y J O S F Z
 E L N O I X I F I C U R C A
 H S U O S M P U O R B L S L
 O W O D H G M S R O T T Y D
 N E S N O P S E R R I G J U
 E J S D N U C D D A N G E R
 S A M O H T B J N I G N S I
 T U O U I M I T O U A E U J
 N U E O E E S G O O O T S C
 E C N A R U S S A E R W E L

			6			2	3	
9					8	6		5
	6	3				9	1	
				4	7	1	8	9
1			8		5			3
2	7	8	1	9				
	9	6				4	7	
8		1	9					6
	5	7			6			

Sudoku

Easy

Intermediate

2		5				8		
			6	5	3			
9							6	
			4		6			1
3								4
7			2		9			
	2							9
			5	7	4			
		4				6		5

Answers to all puzzles on page 23

Let's enjoy, and water and feed

Then followed that beautiful season... Summer....

Filled was the air with a dreamy and magical light; and the landscape lay as if new created in all the freshness of childhood. *Henry Wadsworth Longfellow*



Now that the warmer weather has arrived and all the tender plants have been planted out, we need to keep an eye on watering and feeding, especially the pots and hanging baskets.

Perennials, annuals, bulbs: Deadhead all flowering plants to keep the blooms going. Mark a special occasion with a commemorative rose bush; out of the huge selection here are some of the better ones: "Celebration Time" is pink, semi double, flowers in July and then again in early autumn, good for smaller gardens; "Let's Celebrate" is dark pink, fading quite quickly to a lighter pink, double, flowering in July-September; "Happy Returns" is a shrub rose, ideal for a pot, flowers pink, fading to white from June-September; "Mum in a Million" is pink and double, early flowering, June-August, with a lovely scent. Try growing clematis in borders as a quick way to fill summer gaps, such as "Victor Hugo" and "Wisley" which will weave between other border plants or scramble over shrubs; "Harlow Carr" works well for a sunny border as it is very tolerant of heat; herbaceous clematis are also great in the border; try pink-flowered "Alionushka" and the heavily scented, blue-flowered Clematis heracleifolia "Cassandra"; this type of clematis is simple in its care because the whole plant can be cut down to the ground in late winter; Clematis also make perfect companions for climbing roses using both early large flowering varieties and later flowering ones to fill the gap while the roses are resting before their second flush; also worth considering is growing patio clematis in containers as they flower for a long time and are quite compact; try "Chelsea" and "Bernadine" (1m high) or even neater are "Bijou" and "Filigree (30-60cm high) with no need for support – perfect for window box, trough or hanging basket. Divide bearded irises by selecting young portions of rhizomes, 8-15cm long with a fan of leaves; trim foliage and roots, and replant just below the soil surface.

Trees and shrubs: evergreen hedges need their annual cut to allow the cut end to ripen before the first frosts to avoid damage.

Veg and Fruit: runner beans can struggle to set, especially and hot dry weather; help the plants by watering thoroughly twice a week in dry spells; mulching will also help; also be careful not to spray any pesticides during the day when they could inadvertently kill pollinating insects; it is worth considering growing climbing French beans or a French/runner cross, like

Moonlight, which have less of a problem with setting as they are self fertile. Keep sowing small amounts of salad types, but lettuce does not germinate in hot conditions, so either wait for temperatures to cool or shade the seed drill. There is still time to sow more radishes, spring onions, beetroot, carrot and turnips. Try to avoid thinning carrots as the carrot fly is attracted by the smell. Sow spring cabbage, sprouting broccoli, Chinese cabbage. Keep weeding and watering veges once a week if needed, taking into account that some need more water than others and also are needy at different times; broad brush, plants need watering when fruits are growing and roots need less water than others. Keep tomatoes evenly moist to help prevent the fruit splitting and blossom end rot. Potato and tomato blight strike during warm damp spells; sprays, such as Bayer fruit & Vegetable Disease Control can be used; cut off infected potato foliage as soon as blight is seen, as this will help to protect the tubers underground. Keep checking the cabbage family as damage is caused by white butterflies laying eggs on them and the resulting caterpillars quickly devouring the leaves of any cabbage type plant; put a net over them that is very dense as the butterflies can get through very small holes; make sure the net does not touch the plants in any way; pick off any caterpillars still present.

Greenhouse: temperatures under glass can soar to damaging high levels, stressing plants and scorching leaves, so ventilate from early in the day; use shade paint or netting to cover south facing side of greenhouse; damp down greenhouse floor each morning by thoroughly wetting them; mist plants.

Pond: around small or medium-sized ponds, bog plants that form clumps are preferable to those that run; here are some that will flourish in wet soils at pond edges, but can also be grown in damp garden borders; try Primula Japonica, available in many shades from reds and pinks to white, reaches 50cm and will thrive in sun or partial shade; Euphorbia Palustris, long lasting flowers, grows to 90cm, also has good red and yellow autumn colour; Iris Silver Edge, blue, with leaves reaching to 1.2m in height; Astilbe Chinensis variety Taquetii "Superba", which is easily grown in full sun or part shade and is an ideal feathery foliage plant and a late and long flowerer, 1.2 m in height.

Birds: regularly replenish birdbaths with water; clean with mild disinfectant to avoid spreading diseases such as bird pox.

"...The English winter – ending in July... to recommence in August", *Don Juan* – Byron



Reporting early matches

League: Slinfold Sun 14 June Mark Burton reports:

We had a league defeat against Slinfold CC. It all started so well on what looked like a track that had been used about five times before. Wickets tumbled consistently throughout the afternoon with a run out in the first over from an accurate Wes Pusey guided underarm. Wickets were taken by Ed Tristem (2), Bobby Luff (3), Ben Plant (3) and also Chase (1) as we dismissed Slinfold for 151 inside 40 overs. Slinfold's 9 and 10 bats putting up the most resistance as it happens and that cost us dearly in the end. Particularly impressive was Ed's opening spell of ferocious pace bowling which after 4 overs had his figures at 4-4-0-2! We look forward to seeing that again very soon.

So, what went wrong? We contrived to get ourselves out and reeling at around 60-4 and then 80-8 finally succumbing to 120 all out. Only the ever reliable Graham Brookes (44) and Rob Houston (23 no) offered any resistance. However, the show must go on

Friendly XI Sun 7th. June, Peter Woolley

We mounted a determined stand against a strong side, the "Ancient Mariners", who got 237 for 7 in a timed game, 2 1/4 hours before tea. Luckily they had to take 10 wickets in 1 hour, + 20 overs to win and sportingly only got 8 wickets... so we drew! Our batting line up seemed like strong but sadly the oppo's openers left not an inch, 4 maiden overs from the first 8 and just 7 runs our total. The pressure mounted and very soon we were fighting to save face. Then on came Euan Pusey 9th batsman... showed the rest of us how to keep cool under pressure and fought on to save the game. Also Euan the top HCC scoring 22 Not Out, and a great partnership with Lee Hacker who was unrecognisable at the crease not just wearing a cap but a defensive mind set on staying in at all costs played some great shots. Chase came out to finish with his brother and made us miss a heart beat or two chancing a run out to push the batsmen's total over 100.. final score 118.

Finally, as ever a big big thank you to Frances V and team putting on another splendid tea.

Also a really big welcome to Ollie Bayne debuting for HCC and displaying a fine batting prowess, looking forward to seeing you again later this season

Senior Cricketers:

The cricket season is mid way through and we are still keen to welcome new players of all ages to the club, so please mention it to friends at school and encourage them to come along. The League is very friendly but competitive. Also, don't forget we also have a Friendly XI. If you fancy turning out, please contact our Club or Friendly Captain.

Juniors. Matches and training continue to end of July

Notes for the Diary:

The Junior end of season match, awards and BBQ will be on the afternoon on Sat 11 July. Please come along and watch and also stay for the BBQ.

West Surrey Under 13s Juniors play at Hambledon on Saturday 18th July. Come along and support and enjoy some good junior cricket

Junior coaching sessions are held ages 7-15 years.

The age groups are run by the Team Managers:

Under 15s: Angus Stovold (07768 721204)

Under 13s: Richard Lott (07966 234545)

Under 11s: James Willoughby (07973 698022)

Under 9s: Andrew Williamson. (07803 582409)

We also need Volunteers for all Juniors groups. If you can help in any way, please contact a Team Manager or Caroline Tristem tristem@btinternet.com.

We are running the "The 200 Club" this year, and we hope all those who took part in last year's 4 monthly draws, will participate again. Please contact us if you are interested or need information. 1st Draw in July.

Website: covers club information, events & match results. www.pitchero.com/clubs/hambledonccsurrey

For information about the club, please call the Club Captain, Mark Burton (07722 752465); Friendly Captain, Peter Woolley, (07800 596193); Secretary, Bruce Sleep (01428 684457) or President, Mic. Coleman, (01428 682977). *Arthur Blackman, Chairman*

Hambledon Cricket Club Seniors: Fixtures: July – August

Month	Date	1 st .XI League / Friendly.XI	Opposition	Home/Away	Time
July	Sun. 5	Friendly XI	Flemish Giants	H	2.00
	Sat. 11	Juniors	Juniors Awards & BBQ	H	12.30
	Sun. 12	1 st . XI League	Cranleigh	A	1.30
	Sat. 18	Juniors U 13s	SWS District U13s Juniors	H	1.30
	Sun. 19	1 st . XI League	Abinger	H	1.30
	Sat. 25	Friendly XI	Rudgwick	A	2.00
	Sat. 25	Juniors U 13s	SWS District U13s Juniors	H	1.30
	Sun. 26	1 st . XI League	Cranleigh	H	1.30
Aug	Sun. 9	1st. XI League	Effingham	H	1.30
	Sat. 15	Friendly XI	Unibombers	H	2.00
	Sun. 16	1 st . XI League	Dorking	H	1.30
	Sat. 22	Private Match	-	H	2.00
	Sun.23	1 st .XI League	Effingham	A	1.30
	Sun. 30	1 st . XI	Westcott	A	1.30

Car park gets the nod



The club are pleased to announce that the Car Park plans have been approved and a Contractor is in place.

Work will start at Badger Park in early July on installing a new Car Park at Badger Park. This is the next stage of development at the ground, Local groundwork contractors Gravestock Ltd will carry out the work.

The club would like to thank Carlo Moriano in particular for his hard work putting together the plans

and tenders and also Surrey County Council Community Fund for their support on the funding.

Preparing next season

On the pitch preseason will be kicking off in early July. Anyone interested in trying out for the team should contact Matt at hambledonfc@gmail.com

Seeing eight counties

On a clear day – isn't that the first line of a song? – anyway, on a clear day you can see eight counties from the hill-top church that the Ramblers visited on their latest walk, as Sue Strudwick here reports



Six ladies, one intrepid gentleman and Toby the dog enjoyed a 10-mile walk around St Martha's, the Chantries, Shalford and Blackheath in the Ramblers' most recent walk. Starting at the St Martha's car park near Albury, we had our first uphill trek towards the church of St Martha's on the Hill.

St Martha's is a rare dedication for a church, but this one is rare in other ways, not least because of its lofty situation (see picture). The present church was built in 1850 on the site of a Saxon church. On a clear day, it is said you can see eight counties, looking north on the horizon are Oxfordshire, Buckingham, Berkshire, Middlesex, and London. Turning south there is the distant ridge of the South Downs of Sussex, beyond which is the sea. Looking west are Hampshire and Wiltshire.

Unfortunately, the church was locked so we were unable to go inside and take a look at the medieval font, a gift from St Peter's Hambledon when the church was rebuilt.

We then made our way down the other side of the hill along part of the North Downs

Way, towards Shalford church (the spire could be seen in the distance) and Shalford Mill. From Shalford, we walked towards Godalming along the River Wey, crossing a bridge over the weir and then along the bank of the Wey Canal. We continued along the National Trust path, part of the Wey Navigation, until we reached part of the disused railway line, now a walking/cycling path.

After rejoining the North Downs Way we made our way towards Blackheath, with views of St Martha's temptingly in the distance. We crossed Blackheath, followed a long path all the way to a railway bridge and crossed over the Dorking Road at Chilworth. There was then a long strenuous climb back up to the car park at Martha's.



Next walk

Tuesday, July 14

Meet at the Village Hall, 9am
The aim is to include a picnic.

Short walk

Tuesday, July 28

Meet at Village Hall, 2pm

More information:





Derek Miller, 01428 684362



July



Thank-you for the great response to my article. Monday evenings have been much busier, aided by the What the HEC? Deal and the return of Steak Night saw us run out after 46 steaks had been served up.

SUN	MON	TUE	WED	THU	FRI	SAT
			1	2	3	4
5 Sunday Lunch Remember to book your table!!	6 Ham Egg & Chips £6	7	8 MUM'S NIGHT OFF!	9	<div style="border: 2px solid red; padding: 5px;"> The Merry 120 Every Friday 4 to 6pm Beer & Cider 3.50 House Wine & Prosecco 4.00 House Spirit & mixer 4.50 </div>	10 THE LIKENESS
11 LBC TAP TAKE-OVER 	12 Ham Egg & Chips £6	13	14 STEAK NIGHT! Steak and Chips with a glass of House Wine £15	15 WAGS 3pm BOOK CLUB		16 LBC TAP TAKE-OVER 
17 Sunday Lunch Remember to book your table!!	18 Ham Egg & Chips £6	19	20	21		17 TAPAS NIGHT Remember to book! 
22 Sunday Lunch Remember to book your table!!	23 Ham Egg & Chips £6	24	25	26		18 of Guildford Tap Takeover week-end 10-12 July & Meet the brewer event our regular bar taps will feature beers from The Little Beer Co. You'll have the chance to sample some new beers and chat to the brewers
25 Sunday Lunch Remember to book your table!!	26 Ham Egg & Chips £6	27	28	29	30	19
26 Sunday Lunch Remember to book your table!!	27 Ham Egg & Chips £6	28	29	30	31	20



**What the HEC
Mondays:**

**Every Monday
from June 1st
Ham, Egg &
Chips £6**



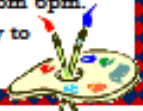
**of Guildford
Tap Takeover
week-end
10-12 July
& Meet the
brewer event**
our regular bar taps
will feature beers
from The Little Beer
Co. You'll have the
chance to sample
some new beers
and chat to the
brewers

SUMMER EXHIBITION – MEET THE ARTIST JULY 15

We enjoy having a summer Artist in residence at The Merry Harriers and this year we are very proud to introduce you to Mikey Coleman.

Mikey has painted a number of local landscapes many of which you will recognise. Come along and meet Mikey on Wednesday 15th July from 6pm.

Exhibition in place from 15th July to 1st September



Mums Night Off!

Mums, bring the little ones for dinner from 5.30pm. You get a rest from cooking, Dad can pick you up on his way home from work!

Steak Night

Second Tuesday of each month
6oz Steak & Chips or Salad plus a
glass of house wine
£15 per person Bookings Please



Delicious Homemade Pizzas £10.00

Thursday to Saturday Eat in or Take Away

Homemade thin crust pizza bases, with our secret recipe
homemade Tomato Sauce, finished with the topping of
your choice

Margherita – Spicy Jalapeno – Vegetarian – Ham
& Mushroom – Goats Cheese & Sun Blush Tomato

Extra toppings 1.00 each

The Merry Harriers, Hambledon Road, Hambledon GU8 4DR
T: 01428682883 www.merryharriers.com E: merryharriers@btconnect.com

El Niño and the tadpoles



What's the connection between El Nino, the warm-water weather pattern in the Pacific Ocean, and tadpoles? Not a lot, except they're both on Earthworm's mind

July looms and mid June at last gets some rain. Earthworm is delighted! The ground is so dry that wiggling is very difficult. Pond levels reflect this and are at a real low for the season. A late brood of tadpoles are having to learn to be mudlarks. Hopefully they will get their legs very quickly and will be able to hop out.

Earthworm recalls the tadpoles in a tank at his school and feeding them pieces of raw meat dangling in the tank on a string once the leg buds were showing. It was probably part of the post-war meat ration! No doubt that now the health part of Health and Safety would prohibit such a thing and Animal Rights would protest about keeping tadpoles in a tank.

Amazingly, inspite of the paucity of rain since the middle of May, everything seems to have grown rapaciously including our hedgerows. Earthworm is delighted that to date there has been no trashing so the primroses and violets that have been so prolific this year will have had time to set seed. Next year should have an even better display.

Waiting with patience is a good attribute in general, says Earthworm in his wisdom. But waiting for

the water board to repair a pot hole can be hazardous as any one who has had to negotiate the whopping water-filled hole in Vann Lane may know to their cost with a burst tyre. Of course no sooner do the repair men finally come to repair it than another leak appears further along. Perhaps that too will turn in to another pot hole story.

Weather patterns have always intrigued Earthworm and the effect of El Niño and current flow patterns on our weather from so far away always seems astonishing to him. There is a lot of publicity about the El Niño weather system in the Pacific but, apparently, according to the Met Office, that is – and Earthworm always believes them! – it does not have an effect on our summer.

But in Greenland the sea temperature has dropped which increases the chances of high pressure over the UK, and this in turn can lead to higher temperatures over the summer. What summer? mutters Earthworm. Here we are getting in to July and we have not seen much of it yet. But let's hope that the Greenland sea temperature will correctly increase the prediction of a warm summer.

Puzzle Solutions

Crossword

D	O	O	R	M	A	N	E	D	E	W
U	F	A	T	A	L	N	I	A		
T	I	F	C	L	E	A	N	S	E	R
Y	E	D	Y	B	H	S				
A	N	D	R	E	S	L	A	C	K	
O	D	E	R	E	L	K				
P	R	E	D	A	T	O	R	V	O	L
A	R	M	D	U	V	E	T	E		
L	O	S	S	E	E	M	T	H	I	N

5	8	4	6	1	9	2	3	7
9	1	2	7	3	8	6	4	5
7	6	3	4	5	2	9	1	8
6	3	5	2	4	7	1	8	9
1	4	9	8	6	5	7	2	3
2	7	8	1	9	3	5	6	4
3	9	6	5	8	1	4	7	2
8	2	1	9	7	4	3	5	6
4	5	7	3	2	6	8	9	1

Easy

Sudoku

Intermediate

Word Search

July
Thomas
Resurrection
Doubt
Doubting
Love
Jesus
Follow
Lazarus
Bethany
Danger
Jews
Die
Life
Confused
Going
Father
Wounds
Crucifixion
Response
Immediate
Lord
God
Honest
Faith
reassurance

X	J	W	D	F	B	L	U	N	G	C	I	H	S
L	D	R	A	I	T	F	I	D	U	T	H	I	U
N	O	I	R	U	E	R	C	F	A	T	H	E	R
L	T	V	F	O	L	L	O	W	E	D	G	E	A
H	L	B	E	T	H	A	N	Y	J	O	S	F	Z
E	L	N	O	I	X	I	F	I	C	U	R	C	A
H	S	U	O	S	M	P	U	O	R	B	L	S	L
O	W	O	D	H	G	M	S	R	O	T	T	Y	D
N	E	S	N	O	P	S	E	R	R	I	G	J	U
E	J	S	D	N	U	C	D	D	A	N	G	E	R
S	A	M	O	H	T	B	J	N	I	G	N	S	I
T	U	O	U	I	M	I	T	O	U	A	E	U	J
N	U	E	O	E	S	G	O	O	T	S	C		
E	C	N	A	R	U	S	S	A	E	R	W	E	L

2	6	5	1	9	7	8	4	3
4	8	7	6	5	3	9	1	2
9	1	3	8	4	2	5	6	7
8	5	2	4	3	6	7	9	1
3	9	6	7	1	5	2	8	4
7	4	1	2	8	9	3	5	6
5	2	8	3	6	1	4	7	9
6	3	9	5	7	4	1	2	8
1	7	4	9	2	8	6	3	5



Mangoes ripe for curdling

What to do with mushy mangoes? They're too good to waste, so turn them into this yummy curd mixture that Sam Gates cooks up this month

Although mangoes aren't exactly seasonal in the UK, my family still has a big fondness for these stars of the fruit world, with their heavenly flavour and their velvety flesh. Perfectly ripe, they make simply the best breakfast, with just a little Greek yoghurt and a sprinkling of toasted almonds to up the ante.

Occasionally I also buy them green, and bring them home to ripen, although timing is crucial as they can quickly trip over the perfection threshold into the land of mush. If that happens, the plus side is that you

have a great excuse to make this divine mango curd which is perfect on hot buttered toast, or drizzled over a summer Pavlova.

So, if you ever find yourself with two slightly mushy mangoes, this recipe will justify their existence beautifully (and if you've only got one, you can halve all the ingredients below and it will work just as well) Adding lime takes an edge off the sweetness and gives it a welcome citrus kick.

Makes about four jam jars-worth of curd, and it keeps unopened in the fridge for about two weeks.

Mango and lime curd

*2 ripe mangos (about 900 grams)
juice and finely grated zest of 2 limes
250 grams golden caster sugar
250 grams butter cut into cubes
8 egg yolks, beaten*

Cut the mango in half and cut all the flesh away from the stone and the peel. Put into a food processor and blitz until it's a super smooth puree.

Bring a pan of water to the boil, then turn the heat down until it is just simmering.

Put the pureed mango and all the other ingredients into a big heatproof bowl (I use a large Pyrex mixing bowl) and place on top of the saucepan of simmering water, making sure the water doesn't touch the bottom of the bowl.

Start stirring the mixture with a wooden spoon (stick the radio on, this might take a while) and keep at it, until the curd is thick. Be patient, and don't try and rush it by turning the heat up as it will be worth the wait. It needs to be thick and sticky.

Pour the hot curd into sterilised jars, cover with a wax disc and seal. When it is cold, pop it in the fridge and only share with people who you really, really like. It's too good to waste!

PS If you're enjoying my recipes, please 'like' my Facebook page 'Food for your brood' and follow me @samgatesfood



The Royal Marsden CANCER COOKBOOK



**Sam Gates's books, *Food for your Brood* and *The Royal Marsden Cancer Cookbook*, are out now.
Check out the website:
www.foodforyourbrood.co.uk**

Take time to stand and stare

The Rev Michael Burgess continues his look at great works of Christian art. This month, *Herdsman with Cows by a River* by Albert Cuyp

GOD IN THE ARTS

“What is this life, if full of care, we have no time to stand and stare?” Those words of WH Davies provide the theme for this year. The paintings chosen celebrate creation in all its wonder and diversity, and we are encouraged to take time to look anew and so become aware of the author of that creation.

This month, however, something is the other way around as we sense animals looking at us in *Herdsman with Cows by a River* painted in 1650 by the Dutch artist, Albert Cuyp.

It is a very ordinary scene of nature. Yet there is a radiance and a tranquility that strike us as we see the herd of cows standing in the still waters. Around them there is a lot of movement: birds fly in the sky, boats are sailing off into the sunset and two fishermen are busy at their work to the left of the canvas. But the cows and their herdsman are quiet and contented, relishing this moment of the day closing, and contemplating the world going by. And two of those cows seem to be looking out into our own world.

In many of Albert Cuyp's paintings the sun bathes each scene in a golden light. Here the clouds are gathering in the sky as the sun sinks down in the west, but there is still a glowing calmness brought by the light of the sky above.

In July we are probably planning holidays. Some holidays can be a frenetic rush, others are those occa-

sions when we simply sit back and relax, letting what we see around us bring refreshment and renewal. It is the way we are encouraged to savour the joy and delight of Scripture in what is called *lectio divina*. Monastic teachers compared it with cows grazing in the field. They pointed to four stages: *Lectio* – we take a bite of Scripture; *Meditatio* – we chew on that Word; *Oratio* – we savour its flavour and nourishment; and *Contemplatio* – we digest its goodness.

Relax in the water

The herd of cows in Albert Cuyp's painting have spent the day doing just that – grazing and ruminating in the fields nearby. The herdsman has brought them to the river to relax in the water. Soon they will take the journey home to the farm and the safety of the cowshed. Tomorrow will bring them the opportunity to graze anew in the gift of another day.

Walt Whitman wrote in one of his poems: “I think I could turn and live with animals, they are so placid and self-contain'd, I stand and look at them long and long.”

As we stand and look at the cows in this painting, perhaps we may realise that whether at work or on holiday, in Sunday worship or Bible reading at home, God can feed us through His world around and in His word in Scripture. As long as we take the time and the care to savour the delights He offers us.



HAMBLEDON VILLAGE SHOP Community Share Offer

Hambledon Village Shop is thriving. Help it continue to do so, by: 1) Subscribing for shares in this Offer; 2) Volunteering your time and skills to work in the shop; 2) Continuing to use the shop – we promise to give you plenty of reasons to spend a little more. Share Offer target £4,000 – Minimum investment £20
Closing Date for Share Offer 17th July 2015 Thank you for your support

You are invited to invest in this community enterprise to ensure that our village shop has a bright future. Hambledon Village Shop is a not-for-profit organisation providing the village with a shop, post office and cafe, run by the community for the community.

Introduction We are lucky in Hambledon to have such a useful shop at the heart of our village.

HAMBLEDON VILLAGE SHOP and the Post Office are at the heart of our community.

Independent village shops have struggled to survive in the last 25 years, with many closing. At the same time, across the country 295 community owned shops have been established and only 10 have failed.

By making this a community enterprise we believe we have the opportunity to create something special, much more than just "the village shop".

This document is issued by **HAMBLEDON VILLAGE SHOP LIMITED** (a Community Benefit Society) & invites you to participate in our share offer.

The Plan is to raise funds to enlarge and refurbish the existing premises to include a café area and to reconfigure the post office; to stock a wide range of goods within a modern, bright and welcoming environment. We intend to fund our plan through a mixture of grants and this share offer to the community of our village.

Why are we offering shares in Hambledon Village Shop Limited? In order to help fund the shop's modernisation and commercial development, as well as to help ensure its future success, much greater emphasis will be put on communicating with our customers and marketing to potential customers.

The new business will be owned by the community for the benefit of the community. As such it will be in the interest of everyone in the community to make it a success.

Who is leading this Initiative? The Board of Directors of Hambledon Village Shop Limited is leading this initiative. The Board is a group of volunteers with a mix of expertise and professional skills who work throughout the year for the purpose of ensuring that the shop remains financially stable and continues to be of benefit to the wider community of Hambledon and its environs. The Board of Directors will be responsible for all aspects of management of the shop, and will submit themselves for re-election by the members each year at the Annual General Meeting.

The current Board of Directors comprises:

Tim Parker – Chairman, **John Anderson**,
Louise Rhodes, **Alastair Manson**

The Share Offer This Share Offer has been designed to provide the residents of Hambledon with the opportunity to contribute financially to our community shop business in the expectation of receiving a social benefit rather than a financial return. The social benefit of having a local shop will mean different things to different people. The aim is for the shop to be the first choice for all local shopping needs.

For local businesses the focus could be on the Post Office counter and the ability to park.

The shop will also continue to be the social hub of Hambledon. The café in particular will be a welcoming and comfortable place for people to meet. The window contains space for local businesses to advertise their services, and for individuals to post classified advertisements. By investing in **HAMBLEDON VILLAGE SHOP LIMITED** you can help secure this social benefit. **If we can raise between us at least £4,000 from this Share Offer we are confident that we will create a village shop that will exceed everybody's expectations.**

How much do we need? We need to raise at least £4,000 from the Share Offer. The total cost of the required refurbishments to the shop is £34,000. Surrey County Council has given the shop a grant of £30,000. We need to raise the balance from this Share Offer. The total sum is required mainly for refurbishing the enlarged retail space.

What happens if we don't raise enough? If we raise between £2,000 and £3,000 we will still be able to make improvements to the shop but they will necessarily be more limited until the business can afford to carry out the full upgrade from its own reserves.

If we raise less than £2,000 the Share Offer will be deemed to have failed. Unless we can find other forms of capital to enable us to proceed, all those who have invested will be reimbursed in full. This will mean that the shop will have to explore other methods of improving its service to the community.

How does the share issue work and what guarantees do I have for my investment? We are converting the Limited Company into a Community Benefit Society. Each person's shareholding has a single vote attached. Thus every shareholder will have one vote at the AGM, however many shares he or she holds.

Shares should be regarded as a long-term investment in the community. They cannot be sold but you could withdraw them after 5 years, or earlier in exceptional circumstances, on application giving

3 months' notice, at the discretion of the Board of Directors. They will never exceed their initial value of £20 per share, but their value may go down, or be lost completely, if the shop fails to prosper. However, because the shares are issued by a limited company, no further liability can fall on you as a shareholder.

Shareholders will be eligible for income tax relief at 30% of their money invested against their tax liability provided the shares are held for three years.

Precise details of the rules for withdrawal will be voted on by the shareholders at the first AGM. Withdrawal will be at the discretion of the Management Committee who will judge if the business is trading profitably.

The company will not pay dividends on the shares. Since the objective is to secure the long-term future of the shop and post office facilities trading profits will at first be re-invested in the enterprise itself and used to build up reserves. After that, contributions will be made to local community projects, and towards repayment of capital.

The Business Plan and company constitution can be obtained by emailing our Chairman, Tim Parker email: tim@feathercombe.com

We have identified the following risk factors:

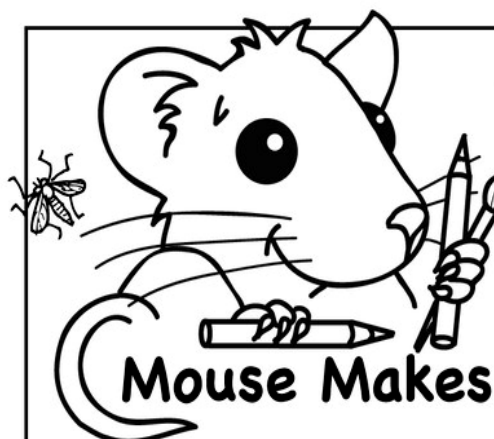
The failure to raise sufficient capital; The loss of the Post Office franchise; The failure to achieve our financial projections; Restrictive government legislation Failure to recruit or keep a good manager

The list is not necessarily comprehensive and any trading activity is vulnerable to changing or unanticipated risk. However, also bear in mind that this share offer was put together by members of our community **for** members of our community. **We would not do it if we didn't believe in it.**

Our share offer is exempt from the Financial Services and Markets Act 2000 or subsidiary regulations; this means you have no right of complaint to an ombudsman. A Community Benefit Society is registered with but not authorised by the Financial Conduct Authority and therefore the money you pay for your shares is not safeguarded by any depositor protection scheme or dispute resolution scheme. As the whole of your investment could carry a risk, please consider carefully in the context of the complete share offer document, and if needed, seek independent advice.

A share application form follows below. Please ensure that it is returned with a cheque to Hambledon Village Shop by closing date of 17th July 2015.

HAMBLEDON VILLAGE SHOP		COMMUNITY SHARE OFFER		Application Form	
Applicant Full Name: (Minimum age 18 years)					
Applicant Address:					
Number of Shares being purchased: £					
(figures & words)					
pounds					
Amount of Share Capital (@ £20 per share): £					
Please sign to acknowledge that you have read the offer document and understand the terms and conditions of the offer:					
Signed :			Date:		
Please make cheques payable to 'Hambledon Village Shop Ltd' and send to:					
Community Share Offer, Hambledon Village Shop Ltd., The Cricket Green, Hambledon, Surrey, GU8 4HF					
HAMBLEDON VILLAGE SHOP LIMITED Registered Society in England No: 7122 Registered Office: Hambledon Village Shop, The Cricket Green, Hambledon, Godalming, Surrey GU8 4HF					



Moses and Aaron went to Pharaoh and said "The Lord, the God of Israel says, 'Let my people go into the desert so they can have a festival to honour me.'"

But Pharaoh said, "Who is the Lord? Why should I obey him? Why should I let Israel go? I not know who the Lord is so I refuse to let Israel go."

Pharaoh punished the Israelites but Moses prayed to the Lord and the Lord said, "I will use my great power against Pharaoh, and he will let my people go."

So the Lord turned the river Nile into blood, then he covered the land with frogs, sent a plague of gnats, then a swarm of flies,

then disease on all the animals, then a skin disease, then a great storm of hail, then a plague of locusts, then darkness that covered the land...

Each time Pharaoh would not let the people go until Lord killed every first born man and animal in Egypt and Pharaoh's own son died. Then Pharaoh made the people leave Egypt with all their sheep and cattle. "Go", he said "And say a blessing for me too."

The Ten Plagues

E	D	E	A	T	H	F	F
H	S	G	L	D	A	R	L
U	O	H	Y	A	U	I	O
B	N	E	P	N	S	L	G
L	O	E	T	D	T	W	S
O	U	P	H	A	R	A	O
O	R	A	R	C	I	T	R
D	I	S	E	A	S	E	E
L	V	S	E	T	R	R	S
O	E	O	D	T	A		A
R	R	V	A	L	E		R
D	N	E	Y	E	L	G	G
F	I	R	S	T	B	O	R
L	O	C	U	S	T	S	E
F	E	S	T	I	V	A	L
S	T	O	R	M	O	S	E
A	A	R	O	N	P	R	A
G	N	A	T	S	W	A	R

Can you find these words from the story in the grid above?

LORD • GOD • MOSES • AARON
ISRAEL • PRAY • HONOUR
FESTIVAL • PHARAOH • EGYPT
RIVER NILE • WATER • BLOOD • FROGS
DUST • GNATS • SWARM • FLIES • GO
DISEASE • CATTLE • SHEEP • SORES
STORM • HAIL • LOCUSTS • LAND
DARKNESS • THREE DAYS • DEATH
FIRST BORN • PASSOVER

READ the full story in **Exodus** chapters 5 to 12



How to donate

- Complete and return the attached form
- Follow the 'How to donate' links in the HCF section of Hambledon's website www.hambledonsurrey.co.uk
- Call your local HCF contacts or our umbrella foundation contacts, the Community Foundation for Surrey, to discuss more complex donations in confidence

Hambledon Community Fund Contacts:

Call Julie Llewelyn (07768 033611) or Katherine Evans (07771 601902) or email both Katherine and Julie at communityfund@hambledonsurrey.co.uk

Community Foundation for Surrey Contacts:

Call our Grants Officer, Louise Phillips, on 01483 409226 or email her at louise@communityfoundationsurrey.org.uk



Hambledon Community Fund - Donation Form

1) Please tick ✓ the correct box or boxes

- ☐ I would like to make a donation of £_____ and enclose a cheque for this amount, made payable to the Hambledon Community Fund.
- ☐ I would like this donation to remain anonymous
- ☐ I would like to set up a regular donation to the Hambledon Community Fund by Direct Debit or Standing Order. Please contact me using the details given below to arrange for this to be set up.
- ☐ I would like to consider leaving a legacy to the HCF in my Will. Please contact me to discuss this further.

2) Please complete the boxes below to receive Gift Aid on this and any future donations

Using Gift Aid means that for every £1 you give, The Community Foundation for Surrey can receive an extra 25p from the Inland Revenue, helping your donation to the HCF go even further (e.g. a donation of £100 becomes £125 with Gift Aid added)

Gift Aid Declaration

I would like to make a donation to the Hambledon Community Fund, administered by Community Foundation for Surrey, using Gift Aid. My details are as follows:

Name:		
Address:		Any notes? (i.e. Please ring-fence for certain project, Surviving Winter etc.):
Postcode:	Email address:	Telephone no.:

I am a UK taxpayer and I would like the Community Foundation for Surrey to treat all gifts of money that I have made to them in the past six years and all future gifts of money that I make from the date of this declaration as Gift Aid donations.

Signature:	Date:
PRINT name in full:	

To qualify for Gift Aid you must pay an amount of Income Tax and/or Capital Gains Tax for each tax year that is at least equal to the amount of tax that the Community Foundation for Surrey will reclaim on your gifts for that tax year. Please notify the Community Foundation for Surrey if you change your name or home address, wish to cancel this declaration or no longer pay sufficient tax on your income and/or capital gains. If you pay income tax at the higher rate, you must include all your Gift Aid donations on your Self Assessment tax return if you want to receive the additional tax relief due to you.

3) Please return this form and your cheque (if applicable), to the following address:

The Hambledon Community Fund, c/o The Community Foundation for Surrey
1 Bishop's Wharf, Walnut Tree Close, Guildford GU1 4RA

Thank you for your support!